



ROCKY VIEW COUNTY

MUNICIPAL DEVELOPMENT PLAN

Shaping the growth of
Rocky View County

ABOUT THE PROJECT

The County is beginning the process of replacing the existing Municipal Development Plan, called the County Plan. The new Municipal Development Plan will be created with input from residents throughout the County to ensure it reflects local opportunities and challenges.

Engagement Process

We are currently in **Stage 1** of the project. Through this engagement we will use your feedback to inform the Vision and Principles that will guide the Municipal Development Plan.

Join us for Stage 2 in the Fall to review the draft strategies for growth.



Thank you for your participation!

For information visit www.rockyview.ca/MDP

HOW TO GET INVOLVED



Take the online survey

Available from August 26, 2019 to September 15, 2019 at www.rockyview.ca/MDP

Attend a drop-in open house

Boulder Creek Golf Course (Langdon)
Wednesday, September 4

Bragg Creek Community Centre
Thursday, September 5

Bearspaw Lifestyle Centre
Monday, September 9

Springbank Park for All Seasons
Tuesday, September 10

Chestermere Christian Fellowship (Conrich)
Wednesday, September 11

Rocky View County Hall
Thursday, September 12

Sign up for project updates

Visit www.rockyview.ca/MDP to find out about future opportunities to participate.

SHAPING GROWTH IN THE COUNTY

What is a Municipal Development Plan?

The Municipal Development Plan outlines the vision for Rocky View County's future from a planning and development perspective, and helps shape how and where the County will grow.

Why is it important?

Rocky View County will likely **grow by at least 15,000 people** in the next 20 years. To accommodate this growth across the County, the new Municipal Development Plan will identify the key areas for new development to occur and set out guidelines for protecting the rural and urban character, economic opportunities, and community diversity that make Rocky View County a great place to live and work.

What will it do?

The Municipal Development Plan will:

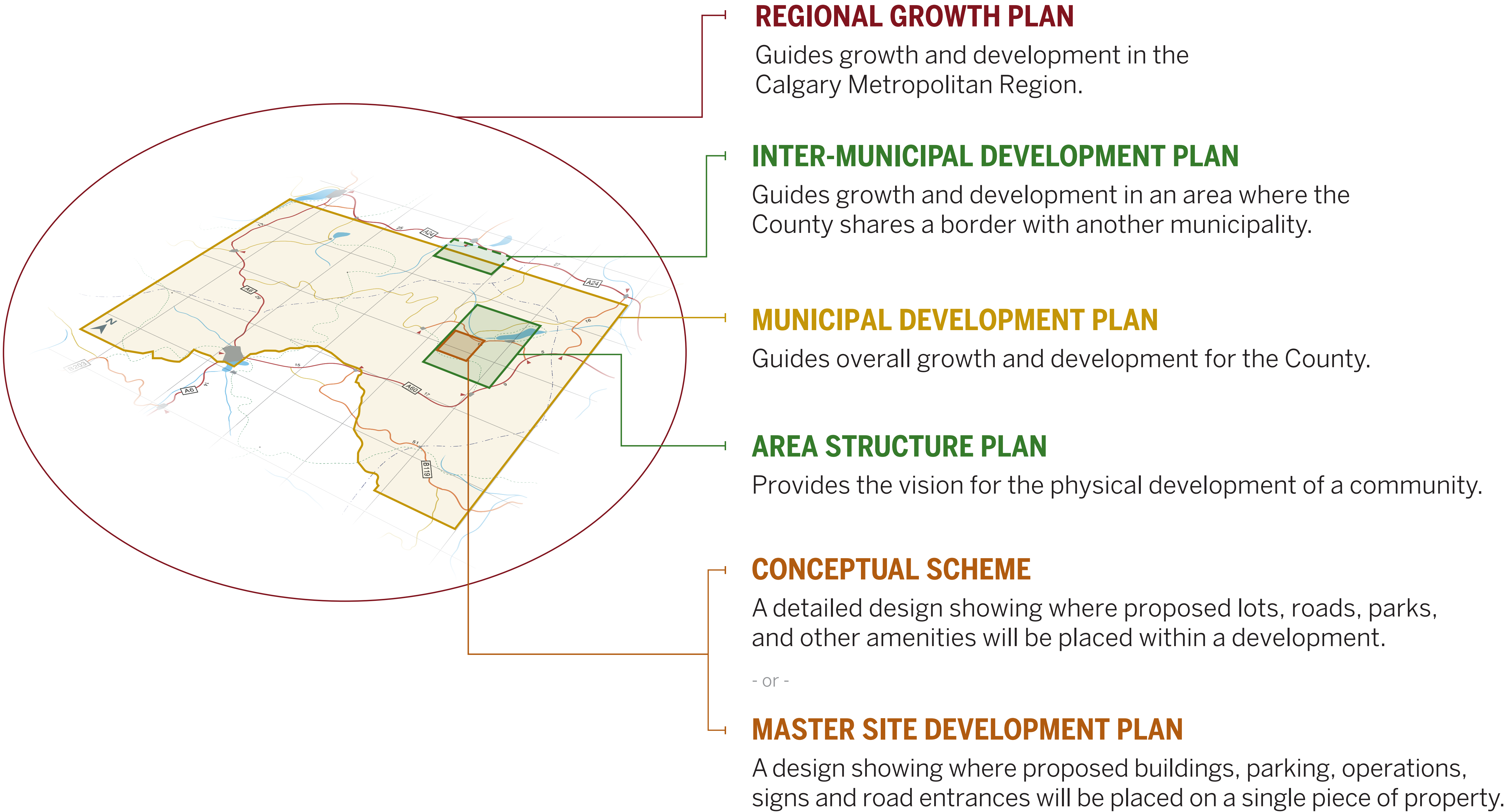
- Set the vision for how to accommodate responsible growth
- Serve as a decision-making tool for Council, County Administration, and stakeholders
- Help residents and landowners understand how their land may be used now and in the future
- Ensure that growth meets the needs of the community



Photo Credit: Jack Borno

RELATED PLANS & POLICIES

There are a number of plans that determine how land is used in Rocky View County.
The diagram below illustrates the Municipal Development Plan's relationship to other plans.



Leading Rocky View County Strategic Plan

“Leading Rocky View County” is a 15 to 20 year Strategic Plan for creating a stronger, stable, and resilient Rocky View County.

The following objectives from the Strategic Plan will help to inform and direct the new Municipal Development Plan:

Objectives for Responsible Growth

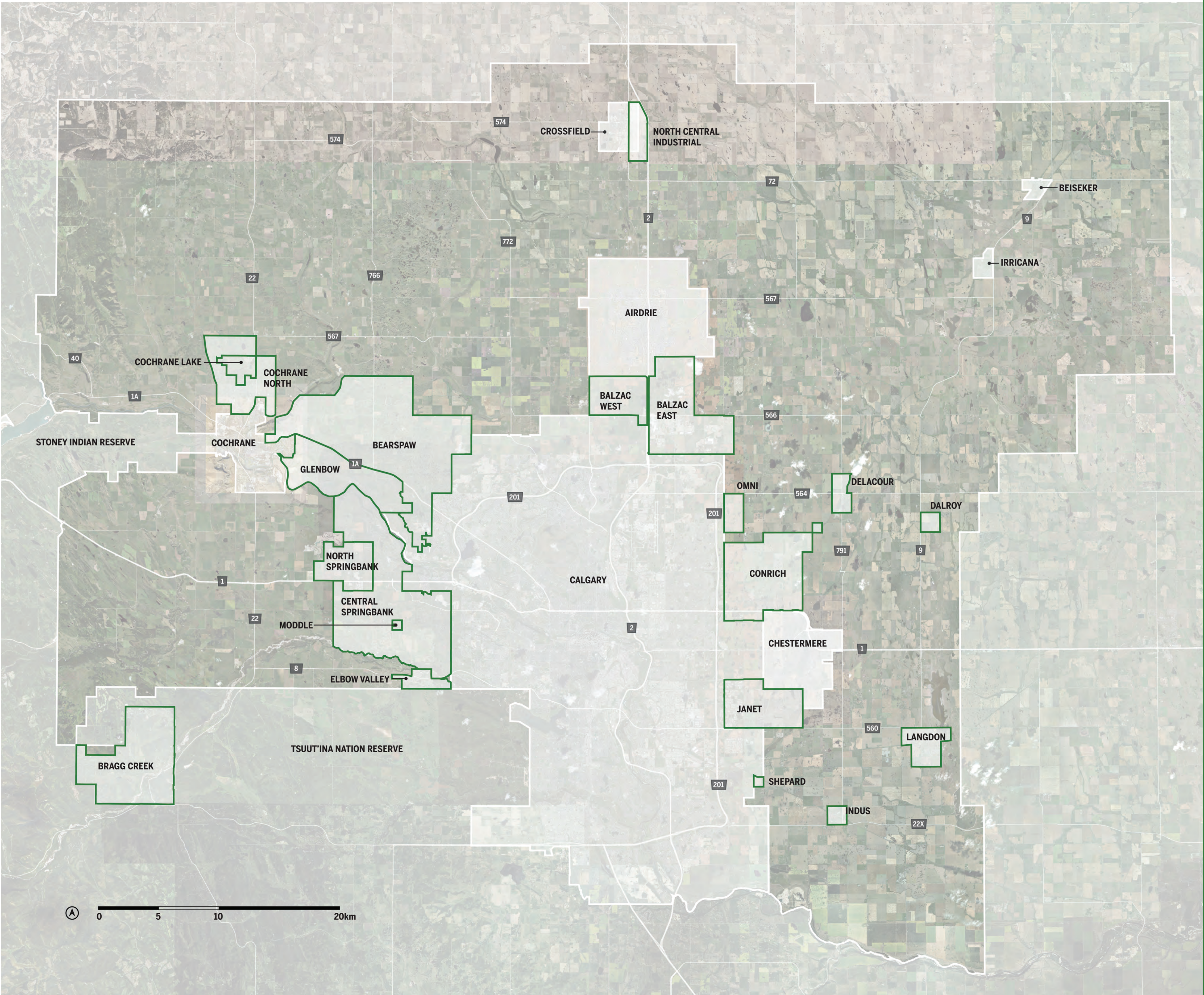
- Protect the landscape and community diversity
- Preserve rural and urban character
- Provide a diversity of community sizes and population densities

Objectives to Guide the County’s Growth Pattern

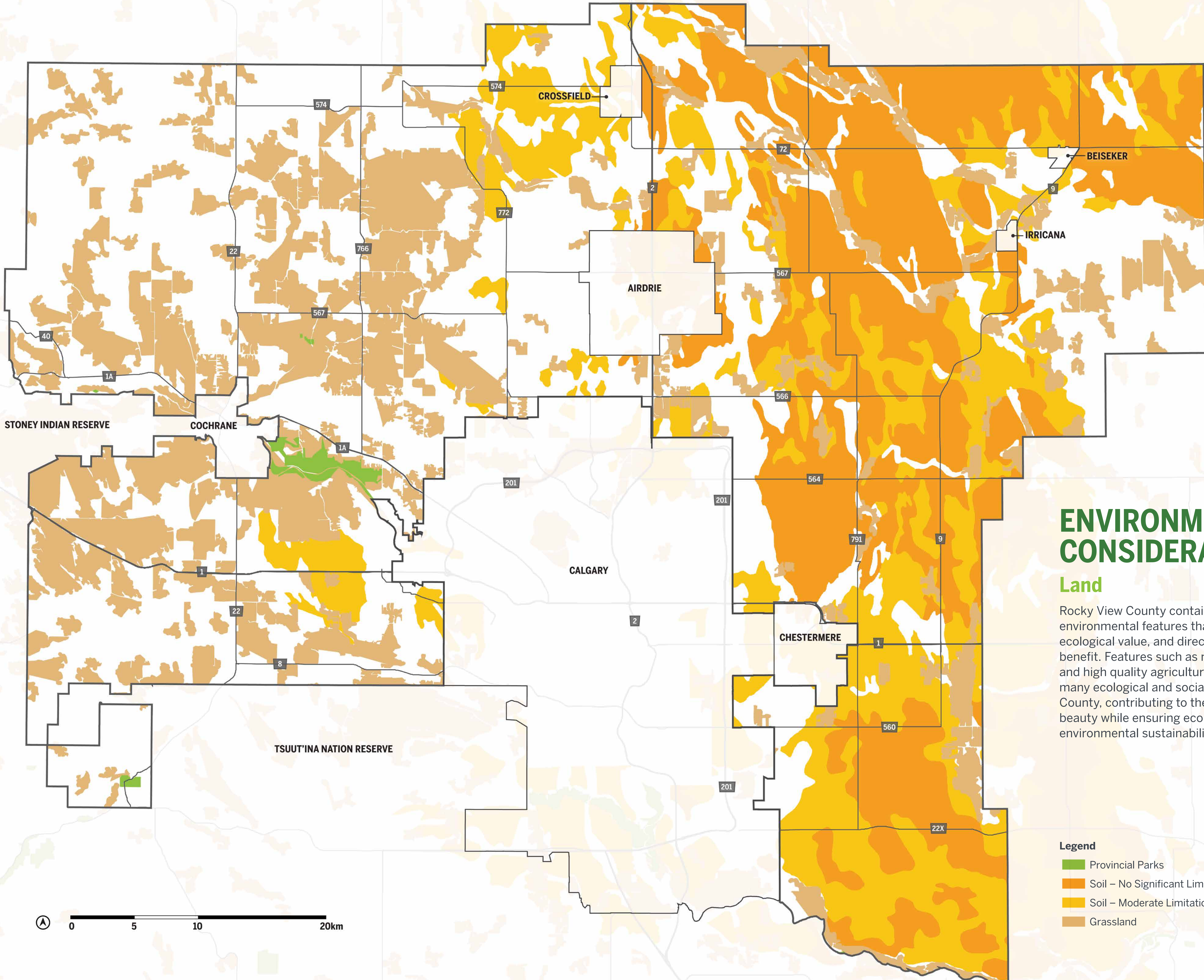
- Growth areas are identified
- Plans are current and followed
- Infrastructure supports growth

Area Structure Plans

The following Area Structure Plans have been adopted by the County:



Adopted Area Structure Plans (ASPs)







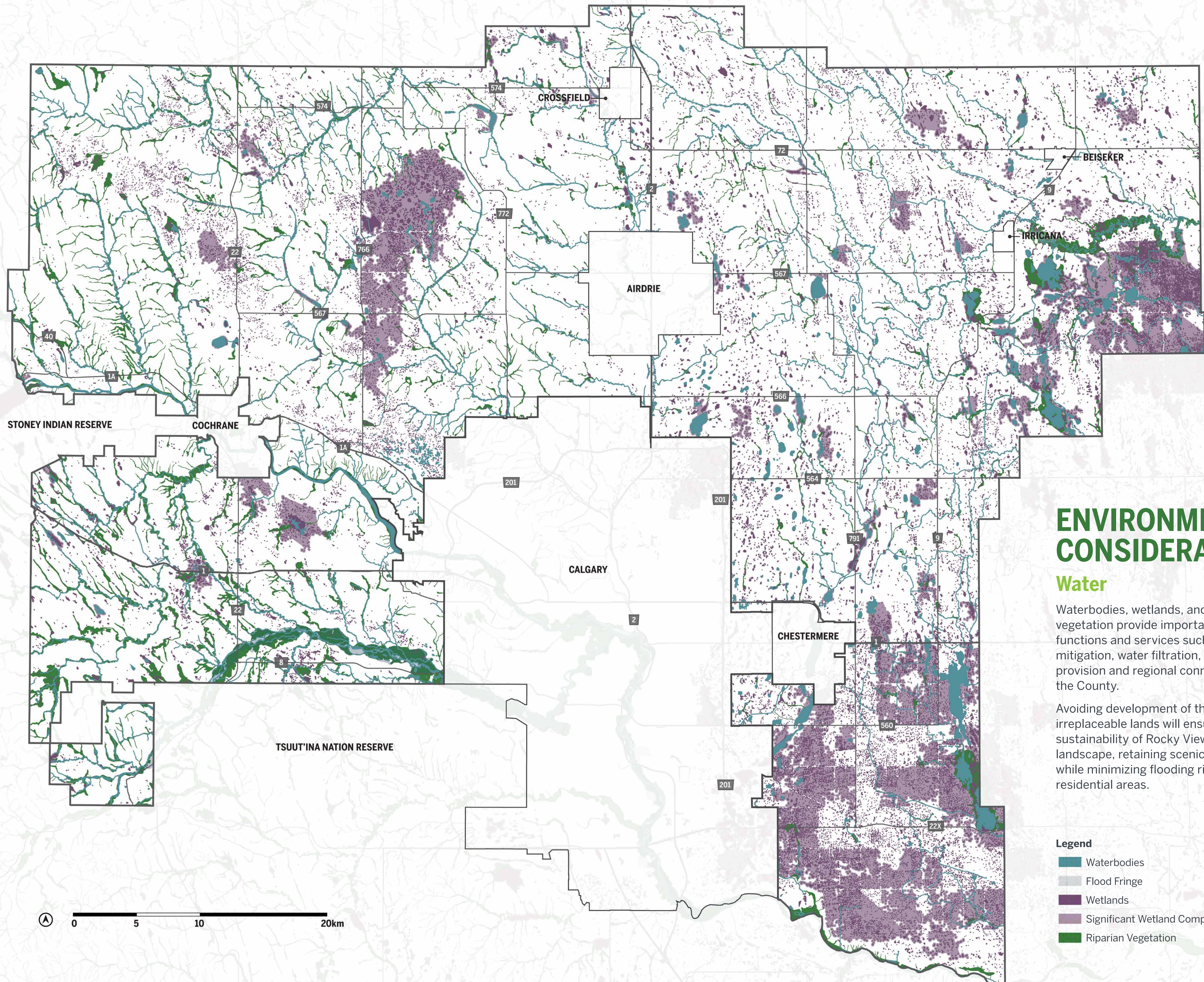
ENVIRONMENTAL CONSIDERATIONS

Land

Rocky View County contains many environmental features that have innate ecological value, and direct economic benefit. Features such as native grasslands and high quality agricultural soils provide many ecological and social services to the County, contributing to the land's natural beauty while ensuring economic and environmental sustainability.

Legend

-  Provincial Parks
-  Soil – No Significant Limitations for Crops
-  Soil – Moderate Limitations
-  Grassland



ENVIRONMENTAL CONSIDERATIONS

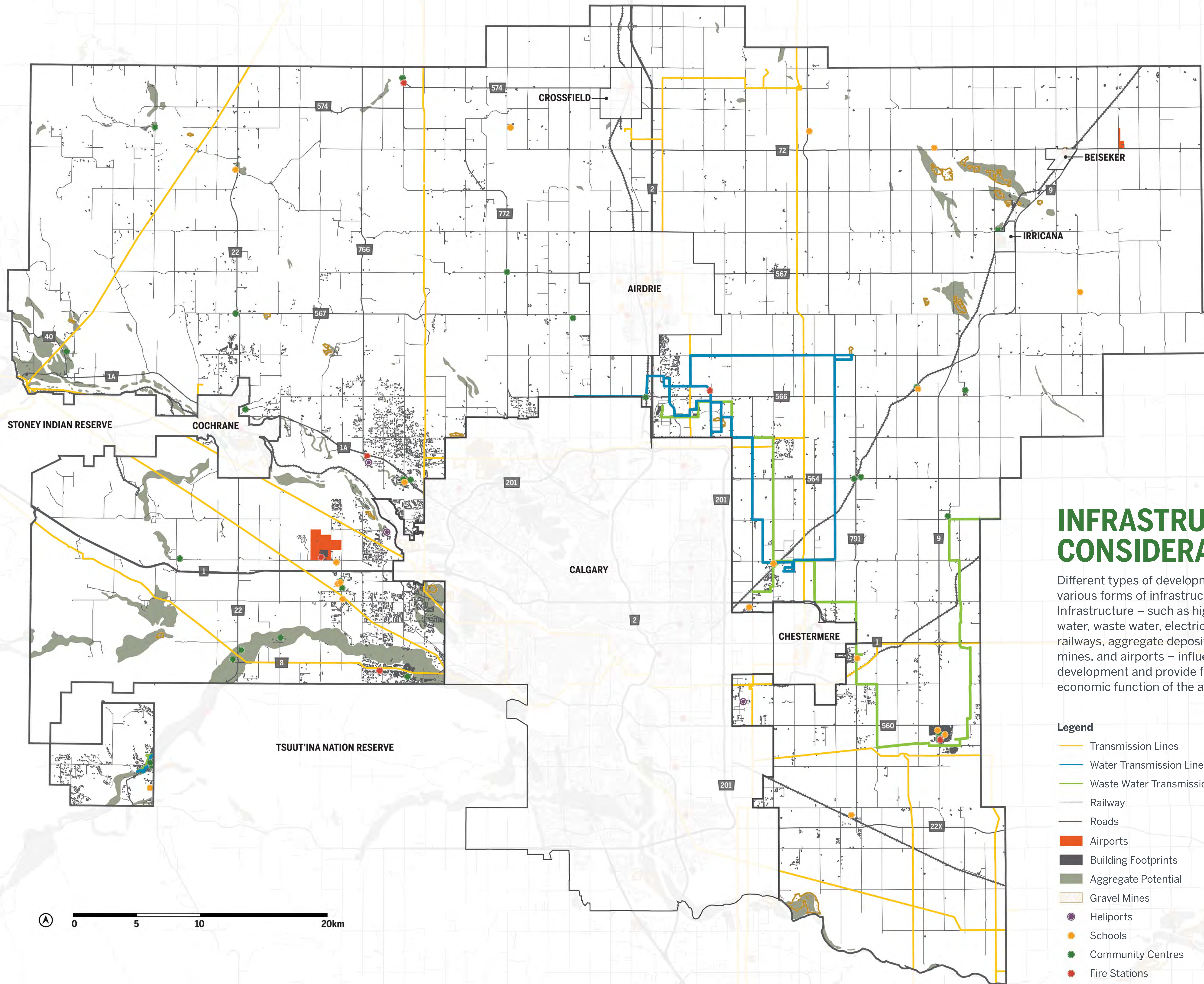
Water

Waterbodies, wetlands, and riparian vegetation provide important ecosystem functions and services such as flood mitigation, water filtration, habitat provision and regional connectivity across the County.

Avoiding development of these irreplaceable lands will ensure the sustainability of Rocky View's natural landscape, retaining scenic ecosystems while minimizing flooding risks to residential areas.

Legend

- Waterbodies
- Flood Fringe
- Wetlands
- Significant Wetland Complexes
- Riparian Vegetation



INFRASTRUCTURE CONSIDERATIONS

Different types of development require various forms of infrastructure. Infrastructure – such as highways, roads, water, waste water, electricity transmission, railways, aggregate deposits and gravel mines, and airports – influence the cost of development and provide for the continued economic function of the area.

Legend

- Transmission Lines
- Water Transmission Lines
- Waste Water Transmission Lines
- Railway
- Roads
- Airports
- Building Footprints
- Aggregate Potential
- Gravel Mines
- Heliports
- Schools
- Community Centres
- Fire Stations

