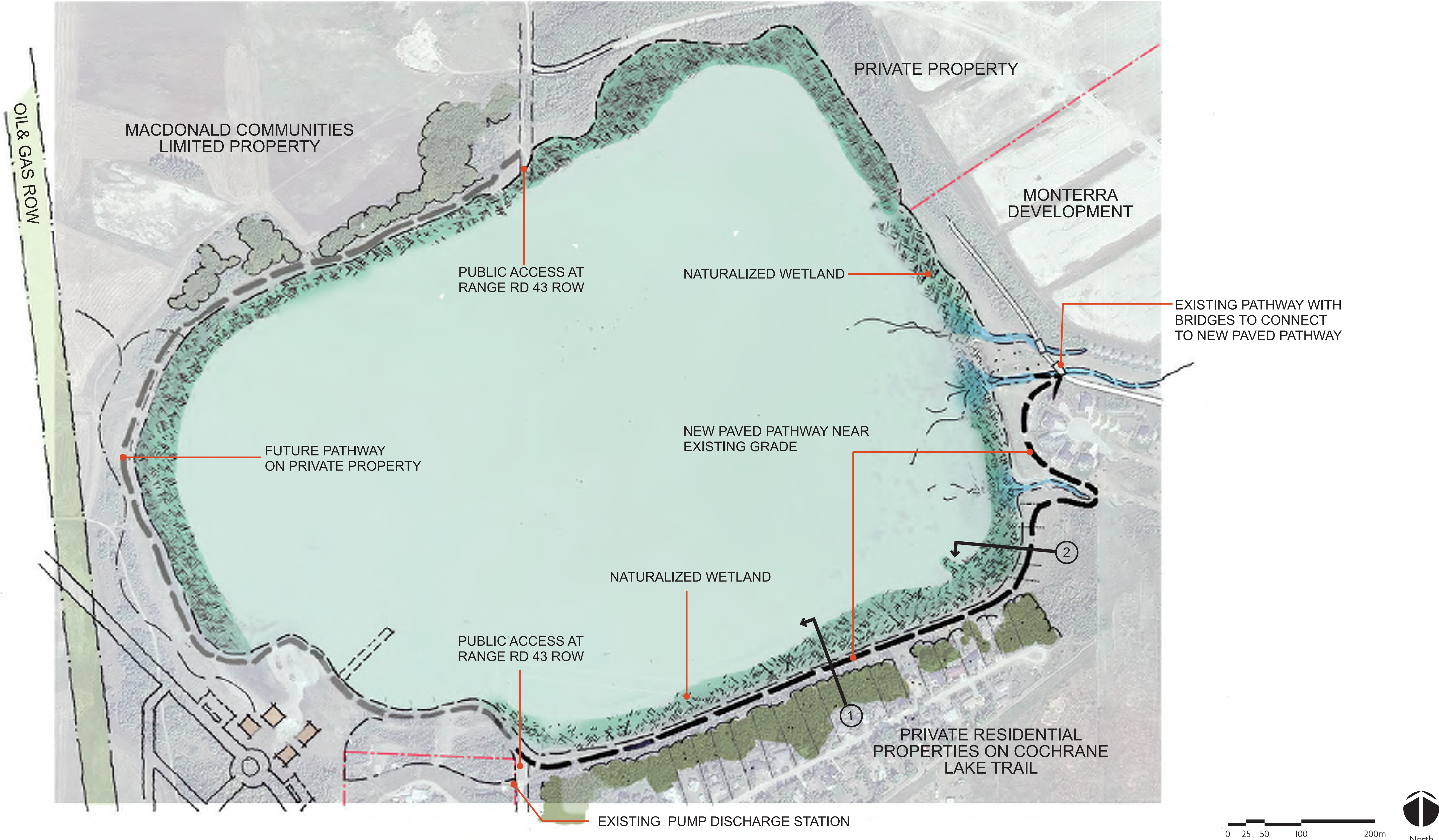
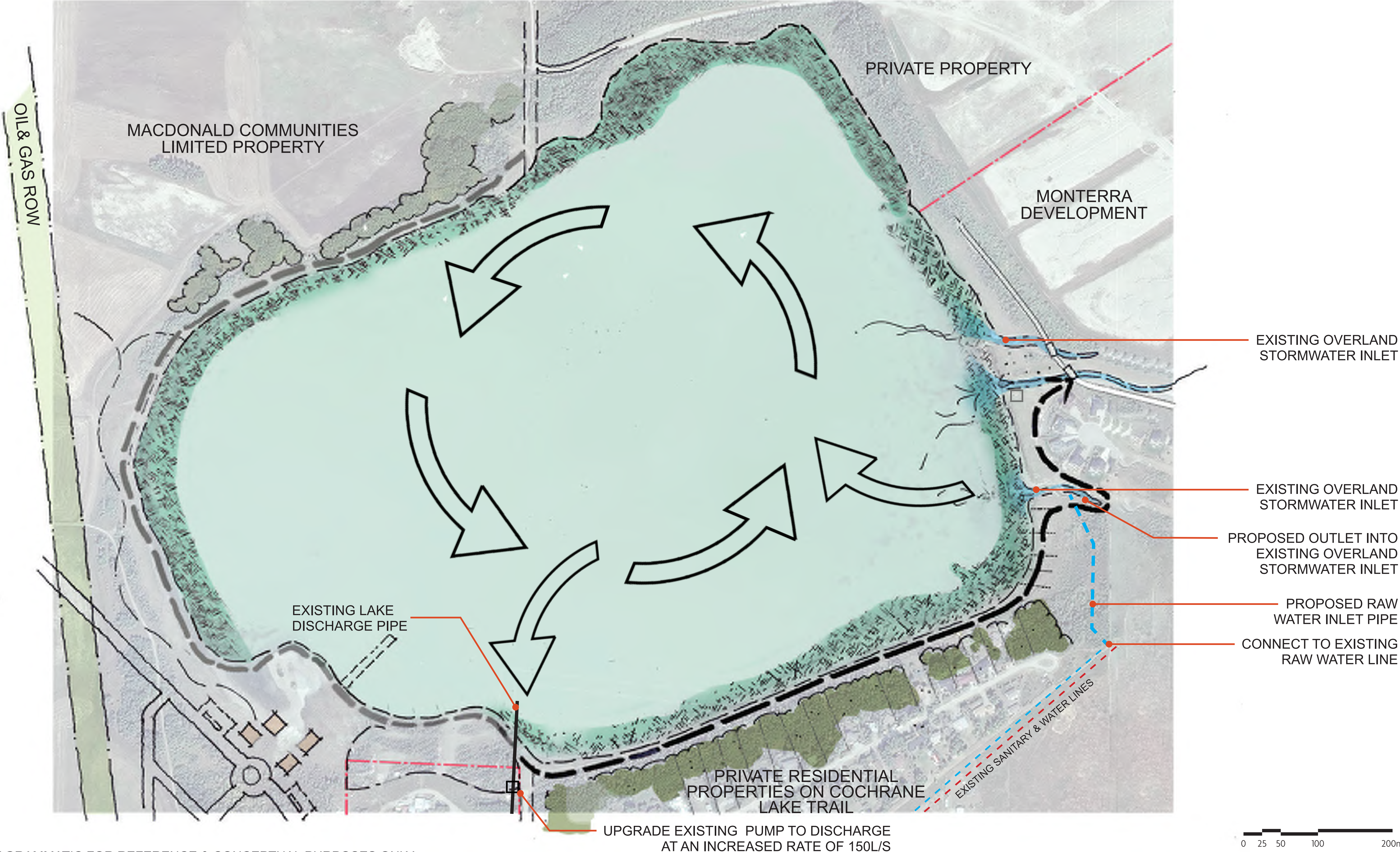


# COCHRANE LAKE IMPROVEMENT PLAN: PATHWAY



ALL IMAGES ARE DIAGRAMMATIC FOR REFERENCE & CONCEPTUAL PURPOSES ONLY

# COCHRANE LAKE IMPROVEMENT PLAN: RAW WATER INLET



ALL IMAGES ARE DIAGRAMMATIC FOR REFERENCE & CONCEPTUAL PURPOSES ONLY

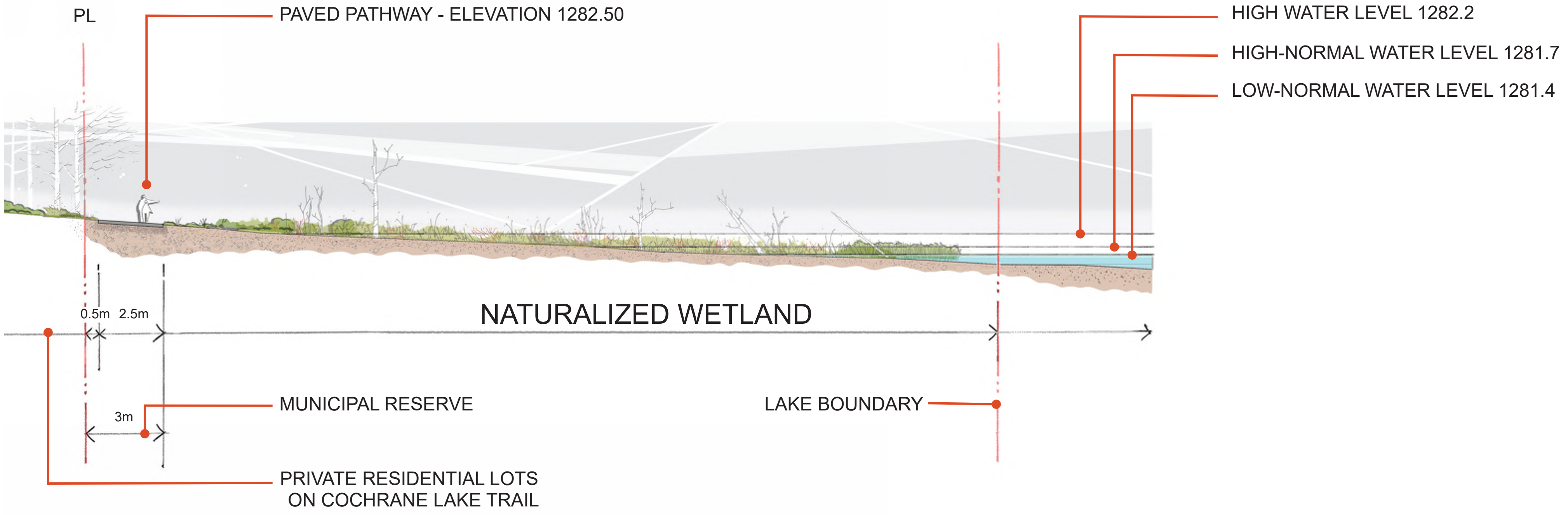
# COCHRANE LAKE IMPROVEMENT PLAN: WATER OUTLET



# COCHRANE LAKE IMPROVEMENT PLAN: PATHWAY

## TYPICAL PATHWAY CROSS SECTION - SOUTH SHORELINE

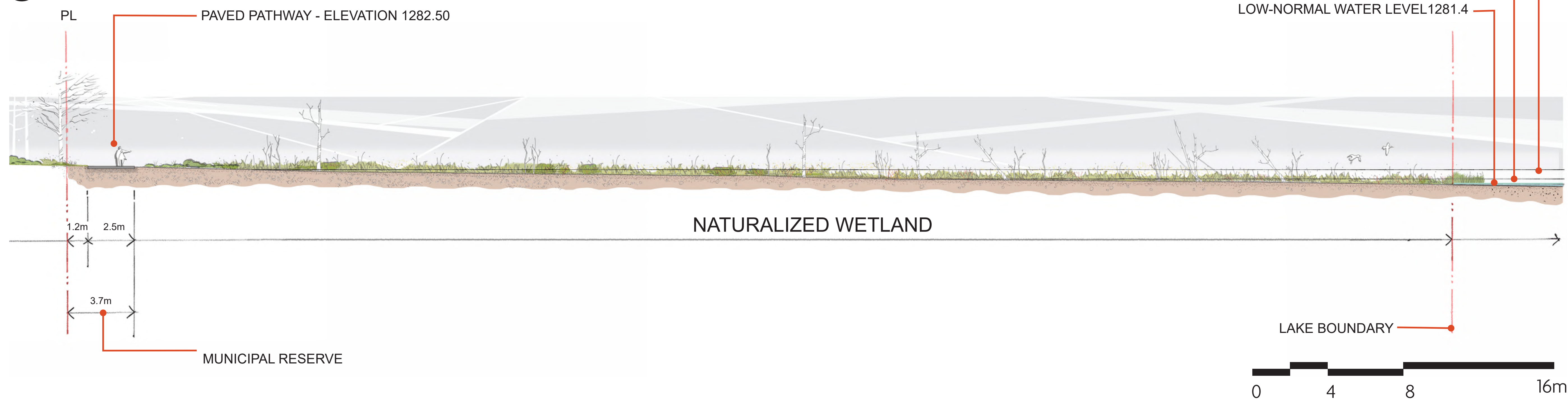
### 1 PAVED PATHWAY ALONG SOUTH SHORELINE



ALL IMAGES ARE DIAGRAMMATIC FOR REFERENCE & CONCEPTUAL PURPOSES ONLY

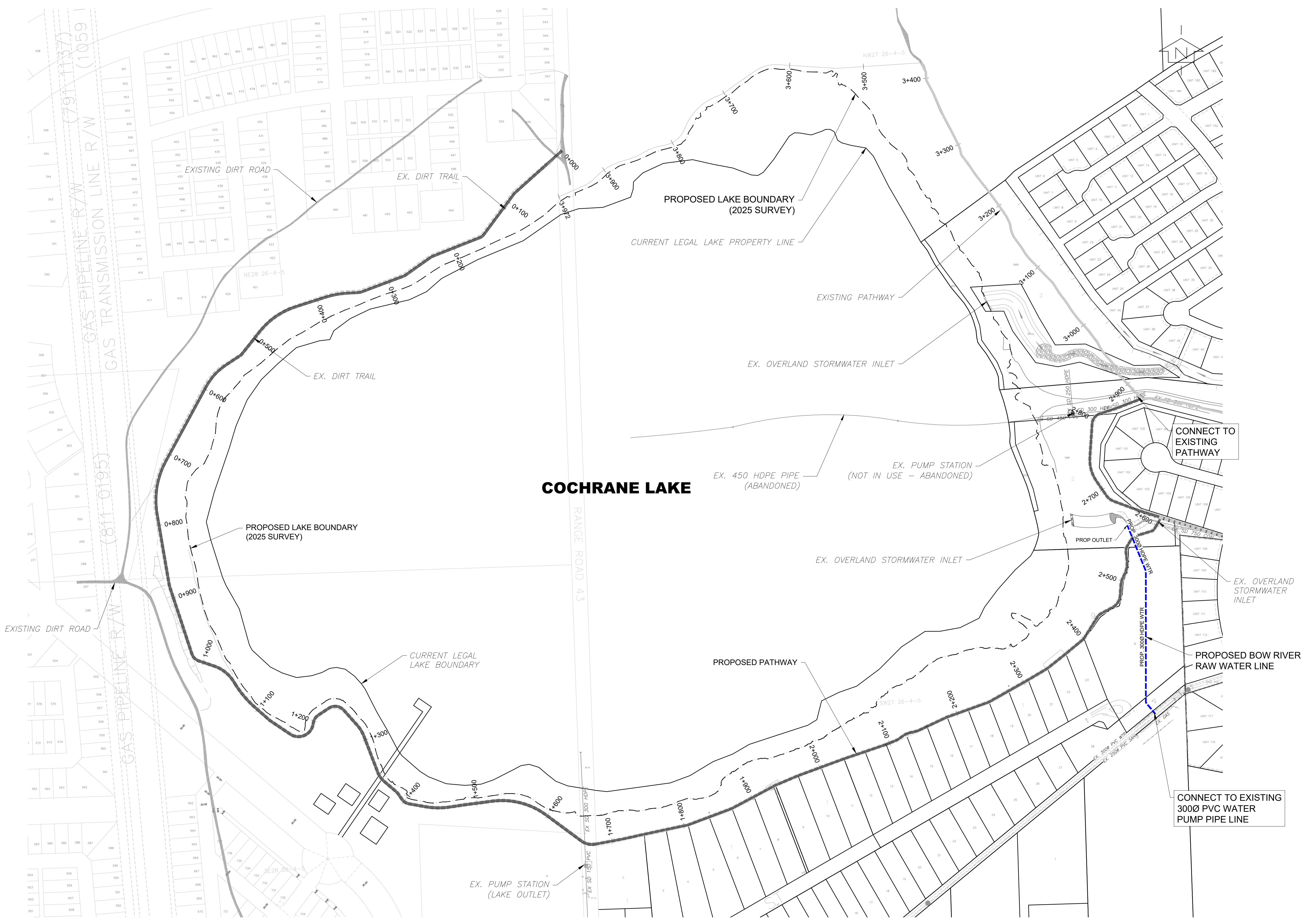
## TYPICAL PATHWAY CROSS SECTION - SOUTHEAST SHORELINE

### 2 PAVED PATHWAY ALONG SOUTHEAST SHORELINE





Plot Date: Dec 18, 2025 - 09:00:46am Plotted by: Aragoa  
 E:\CGY\CGY-23007646-01\_60 Execution\65 Drawings\AE Drawings\AE Drawings\CGY-23007646-01\_Cochrane Lake Z1-SITE PLAN.dwg XREFS: 35011-2-20250331.dwg: ACAQ-23007646-01\_EX-Base.dwg: 35011-3.dwg: RVC.dwg: CGY-23007646-01\_PROG-Base.dwg



- GENERAL NOTES (GN):**
1. ALL COORDINATES AND DISTANCES ARE BASED ON 3TM COORDINATE SYSTEM (NAD 83).
  2. ALL GRADES ARE AT FINISHED GRADE UNLESS LABELED OTHERWISE.
  3. REFER TO ARCHITECTURAL DRAWINGS FOR DETAILED BUILDING INFORMATION.
  4. REFER TO DETAILS (DETAIL 1 AND DETAIL 2) FOR ILLUSTRATIONS OF TYPICAL ELEVATION LOCATIONS AS PER THE LEGEND.
  5. ALL PLANS SUBJECT TO TERMS OF THE DEVELOPMENT PERMIT.
  6. ALL DIMENSIONS ARE IN METRES AND DECIMALS THEREOF.
  7. COMBINED FACTOR APPLIED=0.999740 (1.000260068).
  8. ALL ELEVATIONS ARE GEODETIC WITH DATUM=1000.
  9. ALL WORK TO BE UNDERTAKEN IN ACCORDANCE WITH ALL CITY OF CALGARY CONSTRUCTION SPECIFICATIONS AND ROCK VIEW COUNTY SERVICING STANDARDS.
  10. CONTRACTOR IS RESPONSIBLE FOR LOCATION AND ALIGNMENT OF ALL EXISTING UTILITIES.
  11. CONTRACTOR IS RESPONSIBLE FOR ALL SITE GRADING MATERIAL REQUIREMENTS.
  12. ALL ANCILLARY WORK NORMALLY ASSOCIATED WITH THIS TYPE OF CONSTRUCTION SHALL BE DEEMED PART OF THE CONTRACT. CONTRACTOR TO VERIFY ALL DIMENSIONS AND REPORT ANY DISCREPANCIES TO THE ARCHITECT OR ENGINEER PRIOR TO COMMENCEMENT OF CONSTRUCTION.
  13. CONTRACTOR TO TAKE NECESSARY PRECAUTIONS TO PROTECT ALL EXISTING SITE FEATURES AT THE TIME OF CONSTRUCTION UNLESS SPECIFIED FOR DEMOLITION ON THE DRAWING. THIS INCLUDES ALL SURVEY BARS, STAKES, AND MONUMENTS. MAKE GOOD ANY DAMAGE.
  14. EXISTING SURFACE FEATURES TO BE REINSTATED TO CONDITIONS PRECEDING CONSTRUCTION WHERE EXISTING CONDITIONS WILL BE MAINTAINED.
  15. ARCHITECT OR ENGINEER TO APPROVE ROUGH AND FINISHED GRADES.
  16. ALL DIMENSIONS AND DETAILS TO BE CONFIRMED WITH THE ARCHITECTURAL PLANS. THIS DRAWING IS TO BE READ IN CONJUNCTION WITH THE WRITTEN SPECIFICATIONS, DETAILS, AND DRAWINGS FOR THIS PROJECT.
  17. ALL RETAINING WALLS TO BE CONSTRUCTED IN ACCORDANCE WITH THE ALBERTA BUILDING CODE AND CITY OF CALGARY REQUIREMENTS.
  18. ALL VERTICAL GRADES SEPARATION LOCATIONS ARE APPROXIMATE ONLY AND MAY VARY DUE TO REQUIREMENTS FOR FENCES, GUARDRAILS, SIDEWALKS, AND SWALES.
- NOTES:**
1. WATER LEVEL LINE FROM 2025 FIELD SURVEY, FROM THE AVERAGE OF SOUTH WEST LEVEL OF 1281.042m AND NORTH EAST LEVEL OF 1281.074m.

- LEGEND:**
- ██████████ ZONE 1 - PROPOSED ROCKY VIEW COUNTY (AT GRADE)
  - ██████████ ZONE 2 - PROPOSED MONTERRA (AT GRADE)
  - ██████████ ZONE 2 EXISTING PATHWAY - MONTERRA
  - ██████████ ZONE 3 EXISTING PATHWAY - PRIVATE PROPERTY
  - ██████████ ZONE 4 - PROPOSED MACDONALD COMMUNITIES LTD. (AT GRADE OR ELEV. 1282.50)
  - ██████████ EX. RIPRAP CHANNEL



The contractor shall verify and be responsible for all dimensions. Do not scale the drawing - any errors and/or omissions shall be reported to EXP Services Inc.

**COPYRIGHT RESERVED**  
 The copyrights to all designs and drawings are the property of EXP Services Inc.  
 Reproduction or use for any purpose other than that authorized by EXP Services Inc. is prohibited.

REV	YY-MM	ISSUE	BY	APP	REV	YY-MM	ISSUE	BY	APP
A	1 25-12	ISSUED FOR APPROVAL	TN	RG					
A	1 25-08	ISSUED FOR APPROVAL	TN	RG					
A	0 25-06	CONCEPT PLANS	TN	RG					

R ISSUED FOR RECORD  
 C ISSUED FOR CONSTRUCTION  
 A ISSUED FOR APPROVAL  
 T ISSUED FOR TENDER  
 Q ISSUED FOR COST ESTIMATE  
 I ISSUED FOR INFORMATION

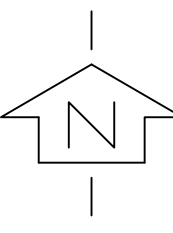
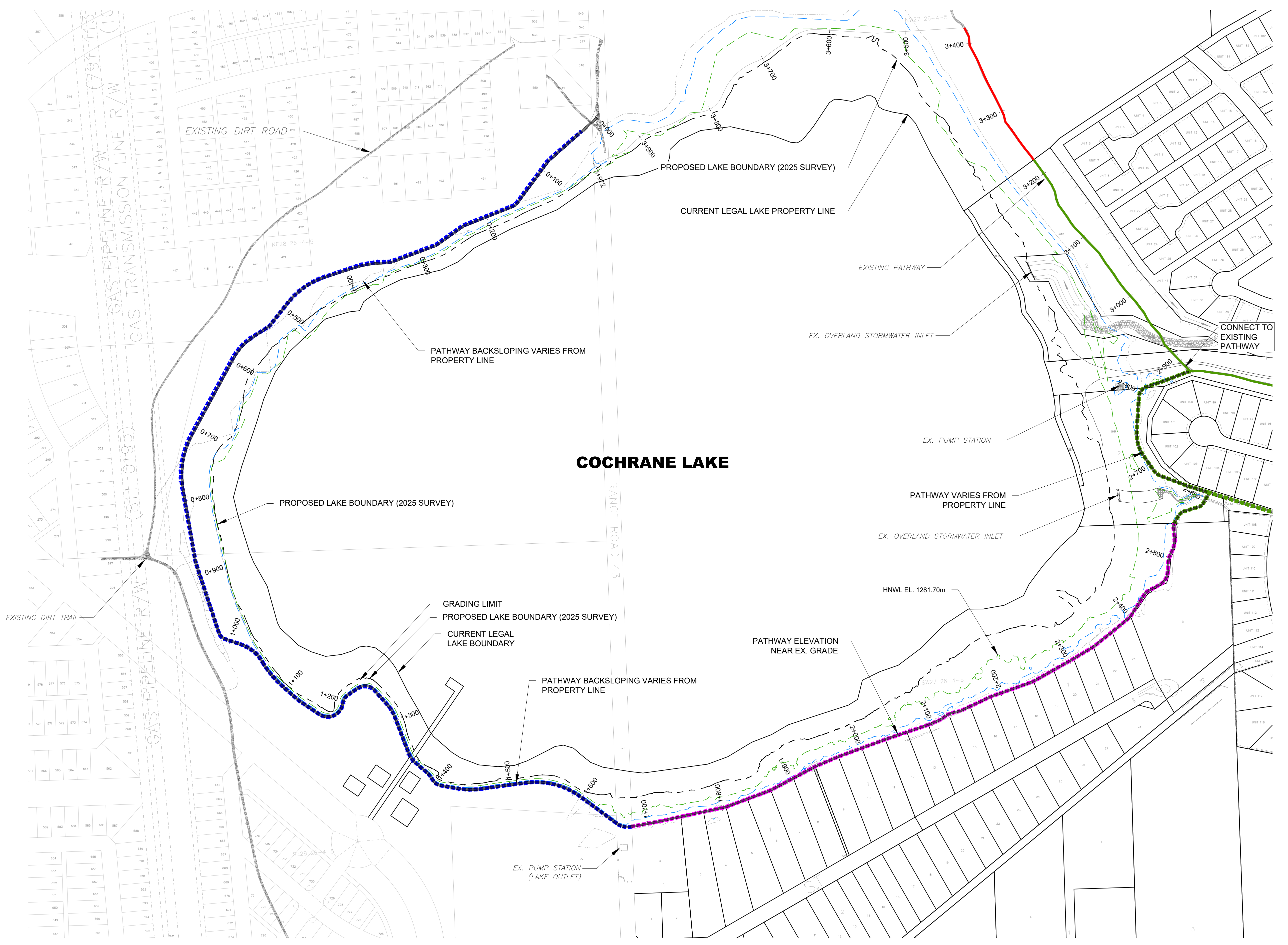


**EXP Services Inc.**  
 220, 48 Quarry Park Boulevard SE  
 Calgary, AB T2C 5P2  
 www.exp.com  
 • BUILDINGS • EARTH & ENVIRONMENT • ENERGY •  
 • INDUSTRIAL • INFRASTRUCTURE • SUSTAINABILITY •



PROJECT	COCHRANE LAKE IMPROVEMENT PLAN		DATE		SCALE	1:2500	
DRAWING	UNDERGROUND PLAN		PROJECT	CGY-23007646-01	ISS	A	REV
CHECKED	RG	DRAWING	03				
APPROVED	RG						1

Plot Date: Dec 19, 2025 10:39:05am Plotted by: AcpoA  
 E:\CGY\CGY-23007646-01\_Execution\65 Drawings\AE Drawings\AE Drawings\CGY-23007646-01\_Execution\65 Drawings\AE Drawings\CGY-23007646-01\_EX-SITE PLAN.dwg XREFS: 35011-2-202503131.dwg; ACAQ-23007646-01\_EX-Base.dwg; 35011-3.dwg; RVC.dwg; CGY-23007646-01\_PROG-Base.dwg



- GENERAL NOTES (GN):**
- ALL COORDINATES AND DISTANCES ARE BASED ON 3TM COORDINATE SYSTEM (NAD 83).
  - ALL GRADES ARE AT FINISHED GRADE UNLESS LABELED OTHERWISE.
  - REFER TO ARCHITECTURAL DRAWINGS FOR DETAILED BUILDING INFORMATION.
  - REFER TO DETAILS (DETAIL 1 AND DETAIL 2) FOR ILLUSTRATIONS OF TYPICAL ELEVATION LOCATIONS AS PER THE LEGEND.
  - ALL PLANS SUBJECT TO TERMS OF THE DEVELOPMENT PERMIT.
  - ALL DIMENSIONS ARE IN METRES AND DECIMALS THEREOF.
  - COMBINED FACTOR APPLIED=0.999740 (1.000260058).
  - ALL ELEVATIONS ARE GEODETIC WITH DATUM=1000.
  - ALL WORK TO BE UNDERTAKEN IN ACCORDANCE WITH ALL CITY OF CALGARY CONSTRUCTION SPECIFICATIONS AND ROCKY VIEW COUNTY SERVICING STANDARDS.
  - CONTRACTOR IS RESPONSIBLE FOR LOCATION AND ALIGNMENT OF ALL EXISTING UTILITIES.
  - CONTRACTOR IS RESPONSIBLE FOR ALL SITE GRADING MATERIAL REQUIREMENTS.
  - ALL ANCILLARY WORK NORMALLY ASSOCIATED WITH THIS TYPE OF CONSTRUCTION SHALL BE DEEMED PART OF THE CONTRACT.
  - CONTRACTOR TO VERIFY ALL DIMENSIONS AND REPORT ANY DISCREPANCIES TO THE ARCHITECT OR ENGINEER PRIOR TO COMMENCEMENT OF CONSTRUCTION.
  - CONTRACTOR TO TAKE NECESSARY PRECAUTIONS TO PROTECT ALL EXISTING SITE FEATURES AT THE TIME OF CONSTRUCTION UNLESS SPECIFIED FOR DEMOLITION ON THE DRAWING. THIS INCLUDES ALL SURVEY BARS, STAKES, AND MONUMENTS. MAKE GOOD ANY DAMAGE.
  - EXISTING SURFACE FEATURES TO BE REINSTATED TO CONDITIONS PRECEDING CONSTRUCTION WHERE EXISTING CONDITIONS WILL BE MAINTAINED.
  - ARCHITECT OR ENGINEER TO APPROVE ROUGH AND FINISHED GRADES.
  - ALL DIMENSIONS AND DETAILS TO BE CONFIRMED WITH THE ARCHITECTURAL PLANS. THIS DRAWING IS TO BE READ IN CONJUNCTION WITH THE WRITTEN SPECIFICATIONS, DETAILS, AND DRAWINGS FOR THIS PROJECT.
  - ALL RETAINING WALLS TO BE CONSTRUCTED IN ACCORDANCE WITH THE ALBERTA BUILDING CODE AND CITY OF CALGARY REQUIREMENTS.
  - ALL VERTICAL GRADES SEPARATION LOCATIONS ARE APPROXIMATE ONLY AND MAY VARY DUE TO REQUIREMENTS FOR FENCES, GUARDRAILS, SIDEWALKS, AND SWALES.

**NOTES:**

- WATER LEVEL LINE FROM 2025 FIELD SURVEY, FROM THE AVERAGE OF SOUTH WEST LEVEL OF 1281.042m AND NORTH EAST LEVEL OF 1281.074m.

- LEGEND:**
- Zone 1 - Proposed Pathway Rocky View County (At Grade)
  - Zone 2 - Proposed Pathway Monterra (At Grade)
  - Zone 2 Existing Pathway - Monterra
  - Zone 3 Existing Pathway - Private Property
  - Zone 4 - Proposed Pathway Macdonald Communities Ltd. (At Grade or Elev. 1282.50)
  - Contour 1282.500
  - High Water Level (HWL) 1282.200
  - High Normal Water Level (HNWL) 1281.700
  - Ex. Riprap Channel
  - Grading Limit
  - Lake Boundary



The contractor shall verify and be responsible for all dimensions. Do not scale the drawing - any errors and/or omissions shall be reported to EXP Services Inc.

**COPYRIGHT RESERVED**  
 The copyrights to all designs and drawings are the property of EXP Services Inc.  
 Reproduction or use for any purpose other than that authorized by EXP Services Inc. is prohibited.

REV	YY-MM	ISSUE	BY	APP	REV	YY-MM	ISSUE	BY	APP
A	1	25-12	ISSUED FOR APPROVAL	TN	RG				
A	1	25-08	ISSUED FOR APPROVAL	TN	RG				
A	0	25-06	CONCEPT PLANS	TN	RG				

- R ISSUED FOR RECORD
- C ISSUED FOR CONSTRUCTION
- A ISSUED FOR APPROVAL
- T ISSUED FOR TENDER
- Q ISSUED FOR COST ESTIMATE
- I ISSUED FOR INFORMATION



**EXP Services Inc.**  
 220, 48 Quarry Park Boulevard SE  
 Calgary, AB T2C 5P2  
 www.exp.com  
 • BUILDINGS • EARTH & ENVIRONMENT • ENERGY •  
 • INDUSTRIAL • INFRASTRUCTURE • SUSTAINABILITY •



PROJECT	COCHRANE LAKE IMPROVEMENT PLAN		DESIGN	RG	DATE		SCALE	1:2500	
DRAWING	SURFACE PLAN		DRAWN	AA	PROJECT	CGY-23007646-01	ISS	A	REV
CHECKED	RG	DRAWING	04	ISS	A	REV	1		
APPROVED	RG								