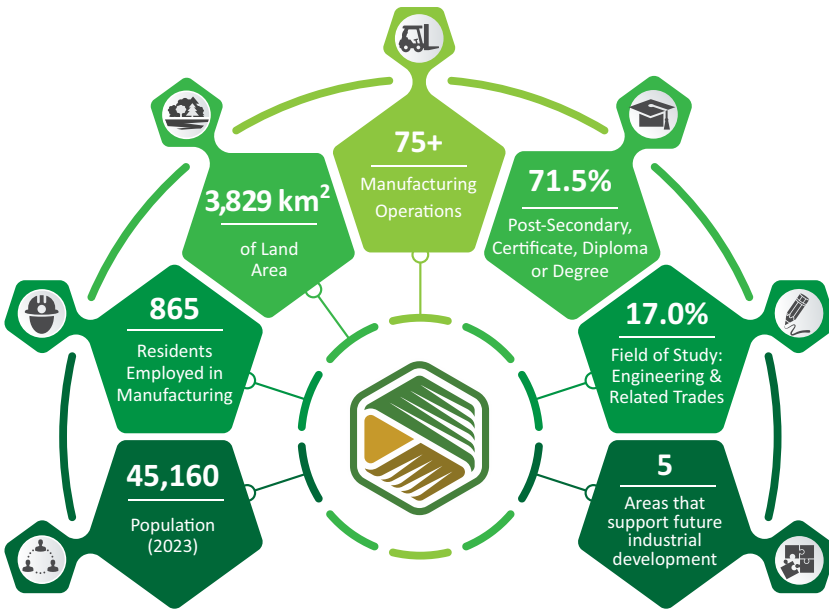


Rocky View County surrounds the city of Calgary to the west, north and east. The county makes up a key part of Alberta's second-largest manufacturing region by employment.

Manufacturing is a key target sector for Rocky View County. The County is committed to fostering a business-friendly environment that supports the growth of this industry. With strategic investments in infrastructure and streamlined processes for new developments, Rocky View County actively welcomes manufacturers looking to establish or expand their operations.



Alberta is one of Canada's three major metal and machinery manufacturing centres. Alberta's Fabrication and Machining sector has diverse, world class design and engineering, machining and welding capabilities.

Alberta's strengths lie in mining, oil and gas field machinery manufacturing, and construction machinery manufacturing. The majority of these outputs stay within the province.

Rocky View County is home to an especially strong cluster of fabricated metal product manufacturers and machinery manufacturers. Rocky View County is also experiencing significant investment in the manufacturing of building products.

Rocky View County Advantages for Manufacturers:

- Shovel-ready properties ideal for large and medium-size manufacturing businesses with yard requirements.
- Proximity to major highway corridors and Calgary's Stoney Trail Ring Road for easy movement of larger equipment.
- Lower land costs and property taxes, and no business tax.
- Access to a large and growing workforce.

Manufacturing in the Calgary Economic Region employs 46,100 workers (2023)

Sub-sectors by employment in the Calgary Economic Region include:

- Food and beverage manufacturing (24.7%)
- Fabricated metal product manufacturing (11.7%)
- Machinery manufacturing (10.6%)
- Wood, pulp and paper manufacturing (6.5%)

Excellent access to efficient, cost-competitive movement of goods

- The Trans-Canada Highway, Highway 2, and the CANAMEX corridor allow companies to reach millions of consumers within a one-day trip
- Intermodal facilities for two Class One railways
- Calgary International Airport



LOOK WHO'S HERE!

Alberta is a hub for manufacturing innovation.

With world-class organizations like Innotech Alberta, the Alberta Machine Intelligence Institute, the Centre for Innovation in Manufacturing - Technology Access Centre (CIM-TAC), and the Food Processing Development Centre, businesses have access to advanced resources and expertise to accelerate their innovations and bring products to market faster.



Manufacturing in Alberta:



\$25.8 Billion in real GDP (2023):
7.7% of total GDP



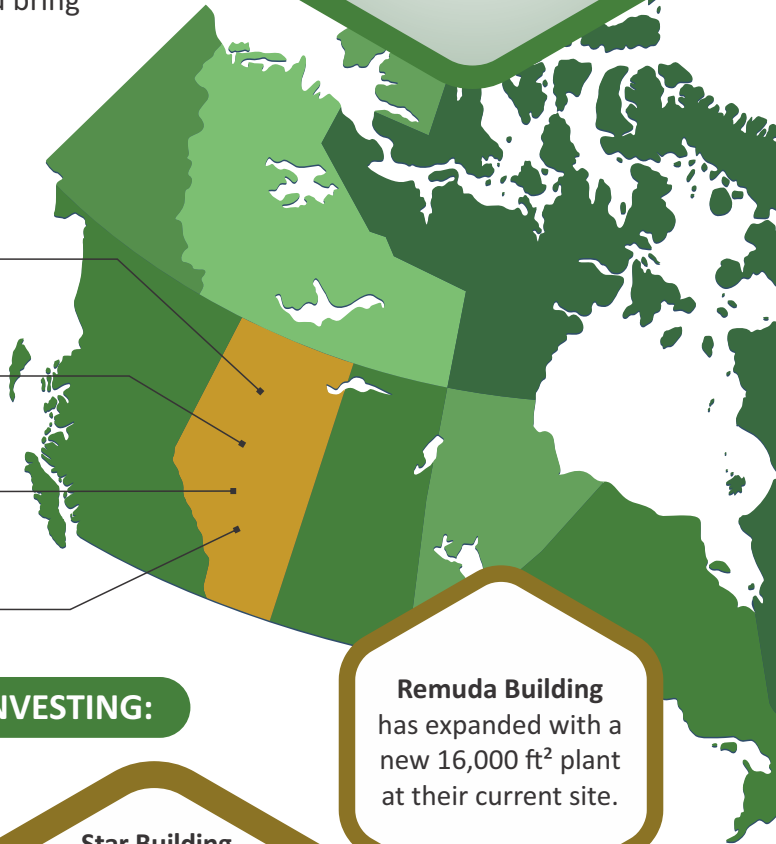
\$42.6 Billion worth of goods
sold abroad (2023)



\$83.80 average output per hour
worked in Alberta (2022)



144,700 Albertans employed:
5.9% of total employment



LOOK WHO'S INVESTING:

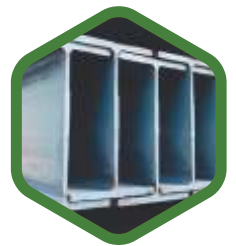
Northstar Clean Technologies

has invested in a \$15.0 million asphalt shingle reprocessing facility. The Empower Calgary facility will process 30,000 – 40,000 tonnes of asphalt shingles into liquid asphalt per year.



Star Building Materials

has expanded its presence with significant investments in new facilities: a 42,700 ft² Office and Joist Plant valued at \$7.4 million, and a 56,300 ft² Materials and Truss Plant valued at \$6.3 million. Additionally, plans for future growth include a 54,800 ft² Finish and Wall Plant, representing a further investment of \$6.3 million.



Remuda Building
has expanded with a new 16,000 ft² plant at their current site.



ROCKY VIEW COUNTY

For more information contact:

Aaron Latimer, Manager, Economic Development

262075 Rocky View Point | Rocky View County | AB | T4A 0X2

Phone: 403-520-8195 | Cell: 403-835-0059 | alatimer@rockyview.ca | www.rockyview.ca

