

COSTCO WHOLESALE CORPORATION
909 LAKE DRIVE
ISSAQUAH, WA 98027
T: 425.313.8100
Costco.com

KEY PLAN
NTS

PROJECT DATA
LEGAL DESCRIPTION: NW 1/4, SECTION 34, TOWNSHIP 24, RANGE 3 WEST OF 5 MERIDIAN
PROJECT ADDRESS: 901 BINGHAM LINK, ROCKY VIEW, ALBERTA
WAREHOUSE: 921 BINGHAM LINK, ROCKY VIEW, ALBERTA
LIQUOR STORE: 941 BINGHAM LINK, ROCKY VIEW, ALBERTA
SITE AREA: 78,868.1m² (7.89 ha) / 19.49 ac
ZONING: HIGHWAY EDGE ZONE
JURISDICTION: ROCKY VIEW COUNTY
BOUNDARY INFORMATION: THIS DRAWING IS BASED ON A TENTATIVE PLAN OF SURVEY FROM MAIDMENT LAND SURVEYORS LTD. RECEIVED APRIL 1, 2022.

BUILDING DATA (MG2 REFERENCE FILE - NOV. 22, 2022)		AREA
TOTAL BUILDING GROSS FLOOR AREA	15,556.0m²	167,443m²
LIQUOR POD GROSS FLOOR AREA	834.3m²	8,980m²
GAS BAR MECHANICAL ENCLOSURE / STORAGE	11.6m²	125m²
GAS BAR WARMING HUT	1.4m²	15m²

SITE DATA		AREA
LOT COVERAGE	20.8%	16,390.3m²
LANDSCAPE OPEN SPACE	23.2%	18,337.3m²
PAVED PARKING AREA	56.0%	44,140.5m²

COSTCO PARKING DATA		PARKING SPACES
TOTAL PARKING REQUIRED (3 STALLS / 100m²)		473
NUMBER OF 3.0m WIDE PARKING SPACES PROVIDED	8	847
NUMBER OF 3.81m WIDE ACCESSIBLE PARKING SPACES PROVIDED	16	16
TOTAL COSTCO PARKING SPACES PROVIDED		863
NO. STALLS PROVIDED PER 100m² OF COSTCO BUILDING AREA		5.27
TIRE INFLATION SYSTEM PARKING		2

1. ISSUED FOR DEVELOPMENT PERMIT

REVISIONS	BY	DATE	APPR

ISSUED FOR APPROVAL, NOT FOR CONSTRUCTION
ALL PREVIOUS ISSUES OF THIS DRAWING ARE SUPERSEDED

SHEET TITLE
SITE PLAN

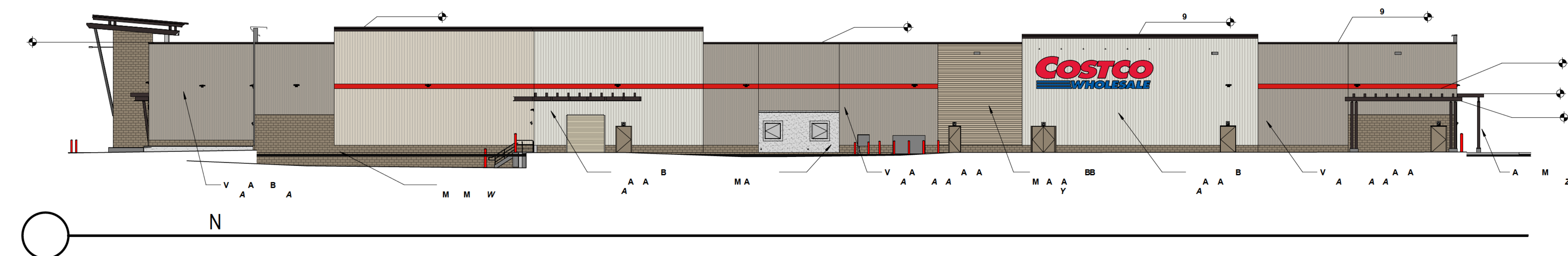
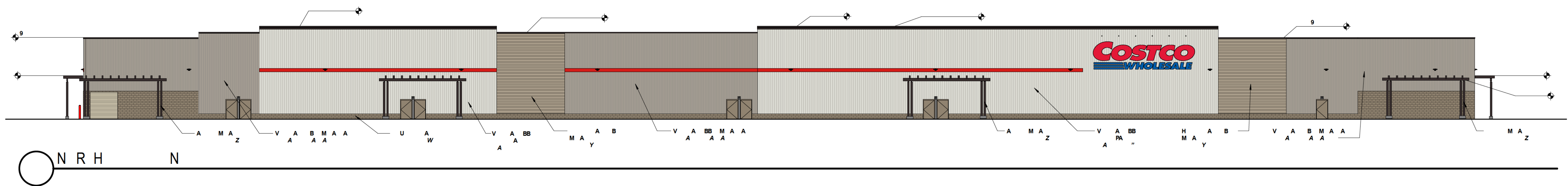
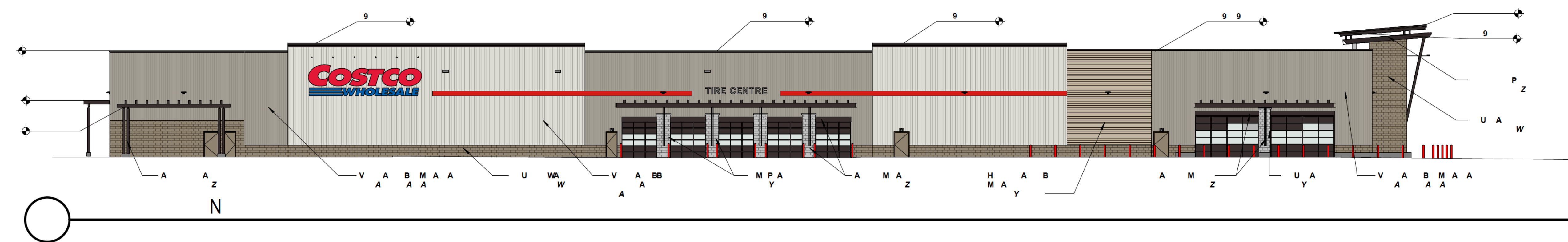
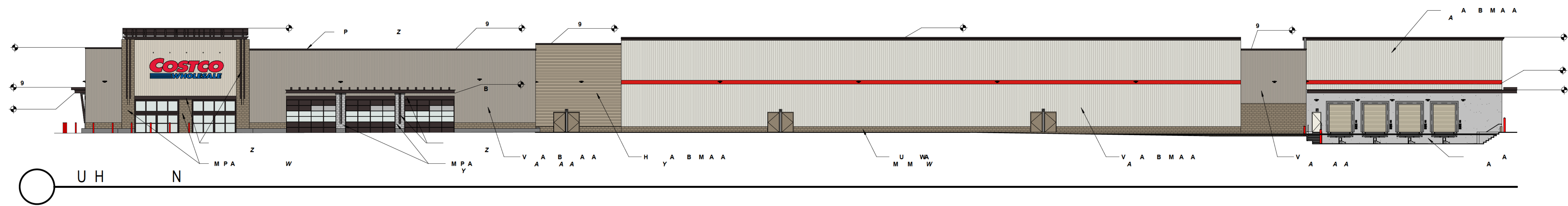
CONSULTANT

DESIGNED	DRAWN	CHECKED
CJM/SODG	CJM	SODG

SCALE	DATE
1:600	NOVEMBER 29, 2022

PROJECT NUMBER	DWG. NUMBER
211-01257-00-PL1	SP-47

For any additional information, or to obtain a copy of the Notice of Decision, please contact **Jacqueline Targett** (jtargett@rockyview.ca or call 403-520-8161)



COSTCO
WHOLESALE
S B B

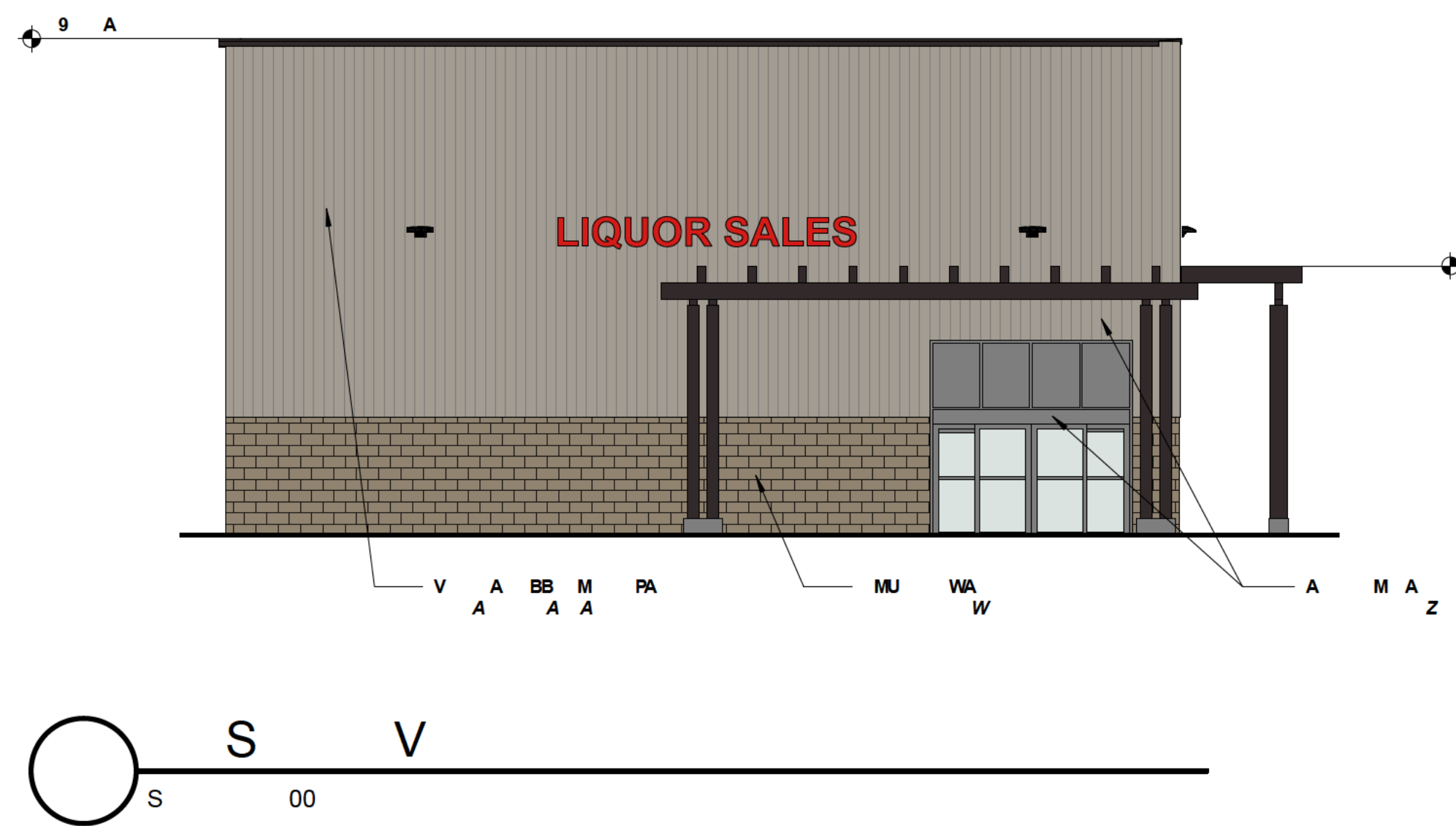
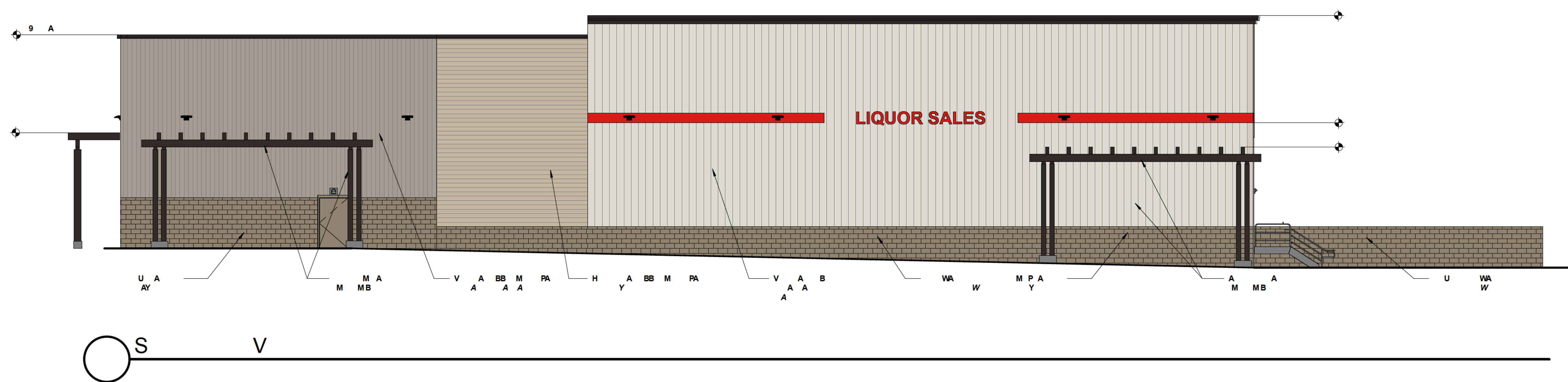
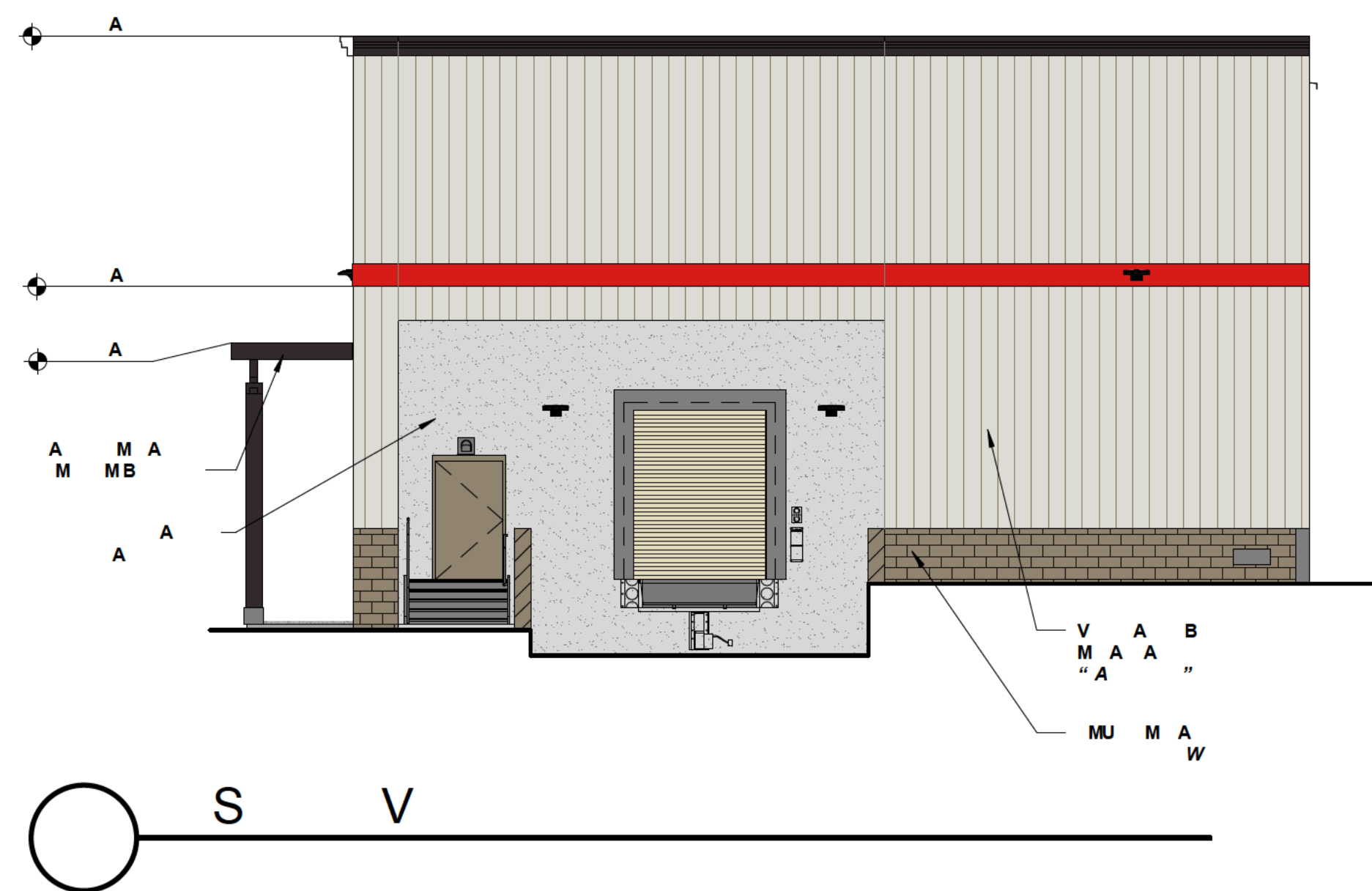
MULVANNY G2
CORPORATION
1101 Second Ave
Suite 100
Seattle, WA 98101
206 962 6500
MG2.com

00

COSTCO WHOLESALE

CONCEPT WAREHOUSE ELEVATIONS

V
A303
S S



COSTCO WHOLESALE

CONCEPT LIQUOR POD ELEVATIONS

COSTCO
WHOLESALE
S B B

MULVANNY G2
CORPORATION
1101 Second Ave
Suite 100
Seattle, WA 98101
206 962 6500
MG2.com

0 0

V S
A 303



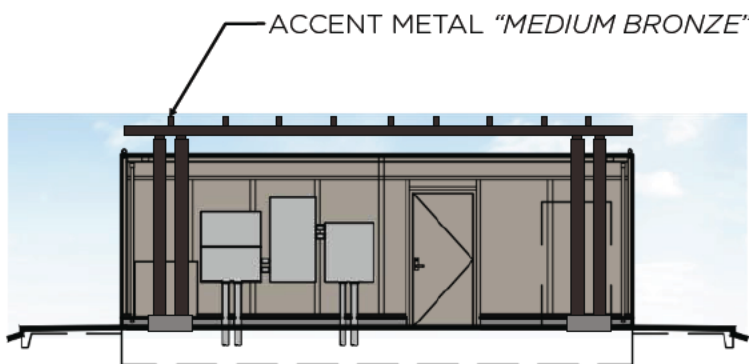
① NORTH/ SOUTH ELEVATION
SCALE: 1" = 40'



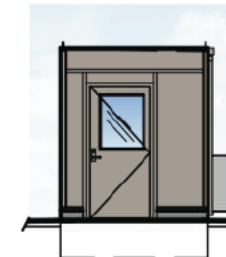
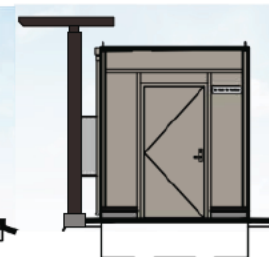
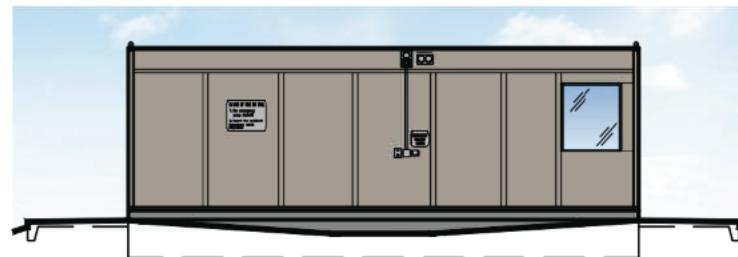
② EAST/ WEST ELEVATION
SCALE: 1" = 40'



③ WARMING HUT
SCALE: 1" = 40'



④ DATA HUT
SCALE: 1" = 40'







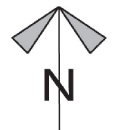




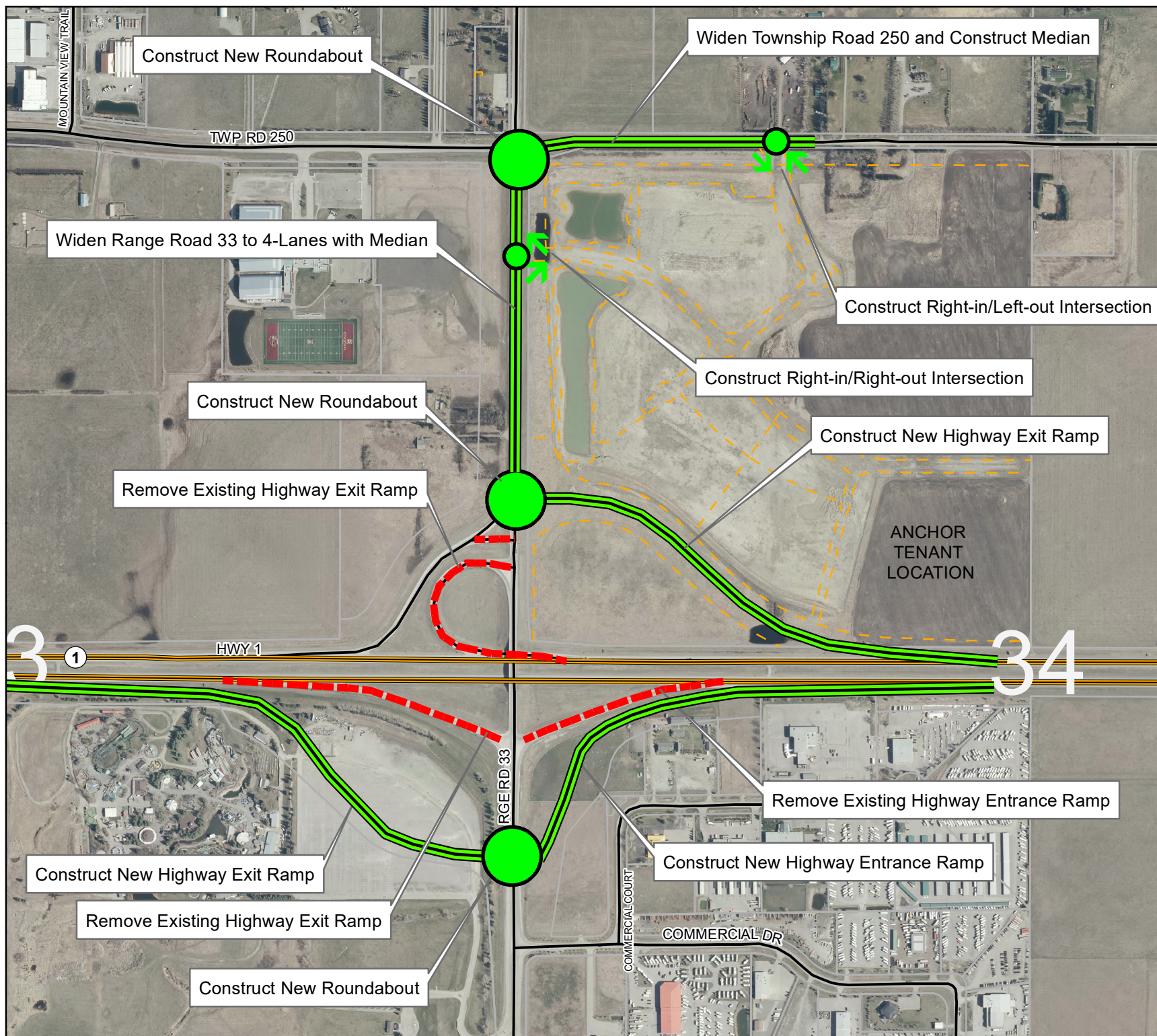
ROCKY VIEW COUNTY
Cultivating Communities

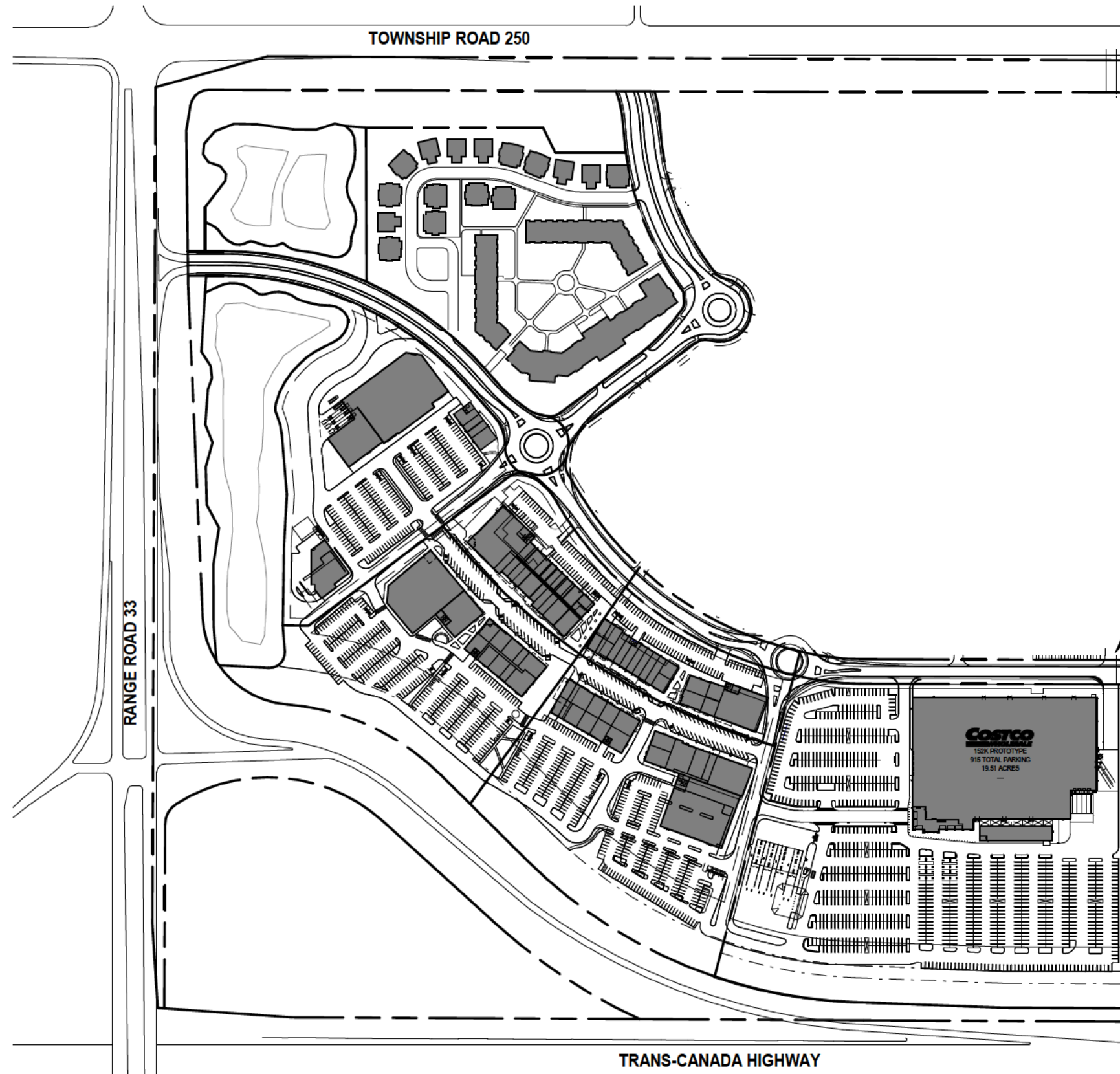
Bingham Crossing
Proposed Road
Network Improvements
(First Phase)

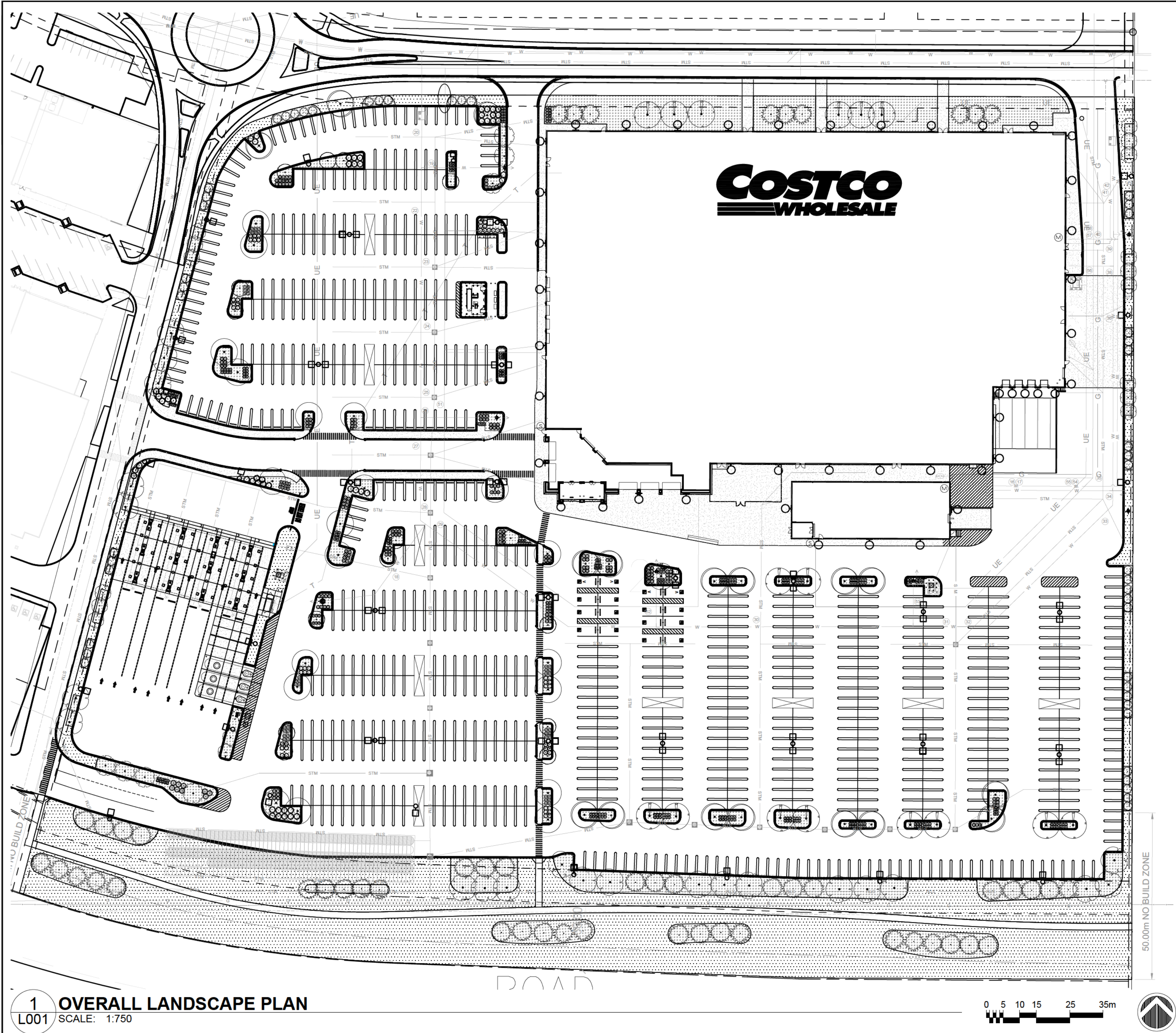
Information as depicted is
subject to change, therefore
Rocky View County assumes
no responsibility for discrepancies
after date of printing.



Printed: Feb 21, 2023







LANDSCAPE LEGEND	
	SOD - REFER TO NOTES, SHEET L001
	BARK MULCH - INSTALLED IN PLANTING BEDS - REFER TO PLANTING NOTES AND DETAILS, SHEET L008
TREES	
	SIBERIAN LARCH
	COLUMNAR COLORADO SPRUCE
	BLUE COLORADO SPRUCE
	PONDEROSA PINE
	OHIO BUCKEYE
	NOBILITY WHITE ASH
	PATMORE GREEN ASH
	RUSSIAN MOUNTAIN ASH
	IVORY SILK TREE LILAC
	GREENSPIRE LINDEN
	BRANDON ELM
SHRUBS / GRASSES	
	ROYAL BURGUNDY BARBERRY
	GLOBE CARAGANA
	GOLD DROP POTENTILLA
	GOLDFLAME SPIREA
	MAGIC CARPET SPIREA
	DWARF KOREAN LILAC
	DWARF EUROPEAN CRANBERRYBUSH
	KARL FOERSTER FEATHER REED GRASS
	PRINCE OF WALES JUNIPER

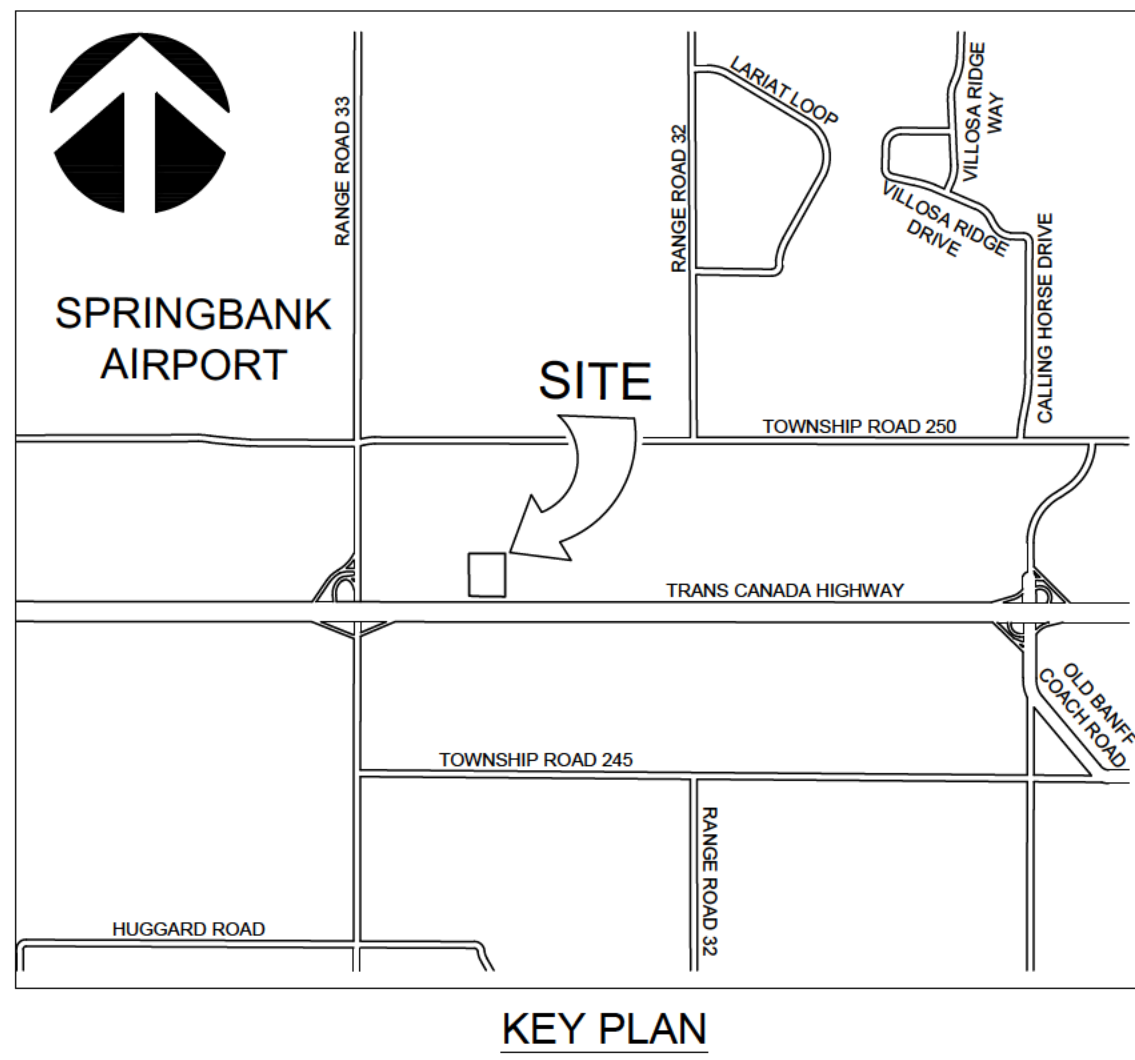
CIVIL LEGEND (REFERENCE ONLY)	
LEGAL	
	PROPOSED PROPERTY LINE
UTILITY	
	GAS LINE
	POWER SERVICES
	SANITARY
	STORMWATER
	WATER
	HYDRANT
	VALVE
	MANHOLE
	CATCHBASIN
	LIGHT STANDARD
	TRANSFORMERS

GENERAL LANDSCAPE REQUIREMENTS AND CALCULATIONS

AREA CALCULATIONS	
TOTAL LANDSCAPE AREA PROVIDED:	14,418 m ²
TOTAL LANDSCAPE AREA REQUIRED:	7,897 m ²

TREE AND SHRUB CALCULATIONS	
TOTAL NUMBER OF TREES REQUIRED = 1 TREE / 46 m ² OF TOTAL LANDSCAPED AREA: 7,897 m ² / 46 = 172 TREES REQUIRED PERCENTAGE OF DECIDUOUS TREES REQUIRED: 60% PERCENTAGE OF CONIFEROUS TREES REQUIRED: 40%	

DECIDUOUS TREES	REQUIRED	PROVIDED
75mm Cal. MINIMUM	103	115
CONIFEROUS TREES	REQUIRED	PROVIDED
3.5m Ht. MINIMUM	69	99
SHRUBS	REQUIRED	PROVIDED
#2 Potted MINIMUM	0	439



- ### NOTES
- REFER TO CIVIL ENGINEERING DRAWINGS FOR GRADING INFORMATION AND LAYOUT.
 - ALL UTILITIES ARE SHOWN AS INFORMATION ONLY. CONTRACTOR TO CONFIRM LOCATION OF ALL UTILITIES PRIOR TO CONSTRUCTION.
 - CONTRACTOR TO STAKE OUT LOCATION OF ALL WORKS FOR REVIEW BY CONTRACT ADMINISTRATOR PRIOR TO ANY REMOVALS OR CONSTRUCTION.
 - CONTRACTOR SHALL CONFIRM ALL DIMENSIONS ON SITE AND REPORT ANY DISCREPANCIES TO THE CONTRACT ADMINISTRATOR PRIOR TO CONSTRUCTION.
 - DURING CONSTRUCTION CONTRACTOR TO PROTECT TO ROCKYVIEW COUNTY STANDARDS ALL EXISTING PAVING, CURBS, SIDEWALKS, FENCING, PLANT MATERIAL, AND BOLLARDS TO REMAIN. ANY AND ALL AREAS DAMAGED DURING CONSTRUCTION TO BE REPAIRED IN ACCORDANCE WITH ROCKYVIEW COUNTY STANDARD CONSTRUCTION SPECIFICATIONS AT NO COST TO THE ROCKYVIEW COUNTY.
 - ALL WORK TO BE DONE IN ACCORDANCE WITH ROCKYVIEW COUNTY STANDARDS UNLESS OTHERWISE NOTED.
 - ALL PLANT MATERIAL IS TO BE NURSERY GROWN STOCK AND SHALL MEET OR EXCEED THE SPECIFICATIONS OF THE CANADIAN NURSERY TRADES ASSOCIATION (CNTA) FOR SIZE, HEIGHT, SPREAD, GRADING, QUALITY, AND METHOD OF CULTIVATION.

REVISIONS		
No.	DATE	DESCRIPTION
8		
7		
6		
5		
4		
3		
2		
1		

ISSUED		
No.	DATE	DESCRIPTION
A	2021-06-08	ISSUED FOR GREEN NK
B	2022-02-01	ISSUED FOR DEVELOPMENT PERMIT
C	2022-04-01	ISSUED FOR TENDER
D	2022-05-31	ISSUED FOR QA/QC
E	2022-08-09	ISSUED FOR QA/QC
F	2022-11-28	ISSUED FOR QA/QC
G	2022-12-23	ISSUED FOR QA/QC
H		

CONSULTANTS

wsp

WSP Canada Inc.
237 4th Avenue SW, Suite 3300
Calgary, AB, Canada T2P 4K3
t:403.243.8380 | f:403.243.0823
www.wsp.com

SEAL

PROJECT TITLE

COSTCO

COSTCO SPRINGBANK

SPRINGBANK, ALBERTA

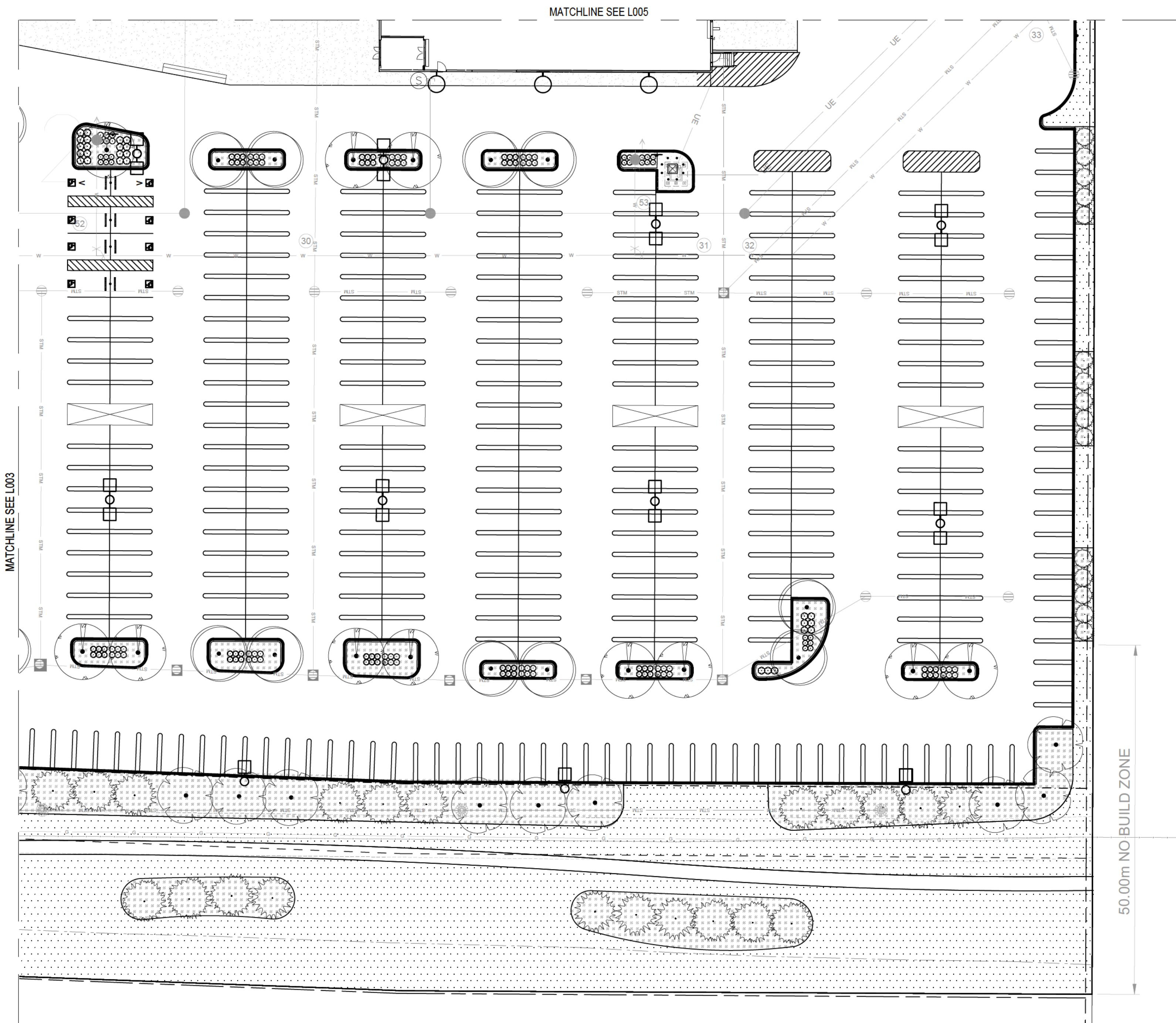
SHEET TITLE

OVERALL LANDSCAPE PLAN

SCALE			
0	5	10	15
20	25	30	35
DRAWN BY			
CV/KF	DESIGNED BY	CV	PROJECT NUMBER
CHECKED BY	APPROVED BY	RM	DATE
L001	G	2022-12-23	

Last Saved: 2023-12-03 12:30:08 PM, By: Fulmer, Kevin, Plot Style: —
\\nrc\caddata\BCCS-11\B25\Projects\2021\11-01252-00 West Calgary Shopping Centre\10_Coverage_3_Drawing02_2_PLAN_Landscape\02_Production\02_Coverage\02.dwg

NOTE:
These design documents are prepared solely for the use by the party with whom the design professional has entered into a contract and there are no representations of any kind made by the design professional to any party with whom the design professional has not entered into a contract.



1
L002 LANDSCAPE AREA A
SCALE: 1:400

LANDSCAPE LEGEND

SOD - REFER TO NOTES, SHEET L001

BARK MULCH - INSTALLED IN PLANTING BEDS - REFER TO PLANTING NOTES AND DETAILS, SHEET L006

TREES

SIBERIAN LARCH
 COLUMNAR COLORADO SPRUCE
 BLUE COLORADO SPRUCE
 PONDEROSA PINE
 OHIO BUCKEYE
 NOBILITY WHITE ASH
 PATMORE GREEN ASH
 RUSSIAN MOUNTAIN ASH
 IVORY SILK TREE LILAC
 GREENSPIRE LINDEN
 BRANDON ELM

SHRUBS / GRASSES

ROYAL BURGUNDY BARBERRY
 GLOBE CARAGANA
 GOLD DROP POTENTILLA
 GOLDFLAME SPIREA
 MAGIC CARPET SPIREA
 DWARF KOREAN LILAC
 DWARF EUROPEAN CRANBERRYBUSH
 KARL FOERSTER FEATHER REED GRASS
 PRINCE OF WALES JUNIPER

CIVIL LEGEND (REFERENCE ONLY)

LEGAL

PROPOSED PROPERTY LINE

UTILITY

GAS LINE
 POWER SERVICES
 SANITARY
 STORMWATER
 WATER
 HYDRANT
 VALVE
 MANHOLE
 CATCHBASIN
 LIGHT STANDARD
 TRANSFORMERS

PLANT SCHEDULE AREA A

CONIFEROUS TREES	QTY	BOTANICAL NAME	COMMON NAME	CONTAINER	SIZE	MATURE SIZE (HT. X SPR.)
SLR	5	Larix sibirica	Siberian Larch	B & B	2.5m Ht.	15.0m x 6.0m
CCS	9	Picea pungens 'Fastigiata'	Columnar Colorado Spruce	B & B	2.5m Ht.	6.0m x 3.0m
CBS	15	Picea pungens 'Glaucia'	Colorado Blue Spruce	B & B	2.5m Ht.	15.0m x 6.0m

DECIDUOUS TREES	QTY	BOTANICAL NAME	COMMON NAME	CONTAINER	SIZE	MATURE SIZE (HT. X SPR.)
PGA	11	Fraxinus pennsylvanica 'Patmore'	Patmore Green Ash	B & B	60mm Cal	15.0m x 8.0m
GLL	10	Tilia cordata 'Greenspire'	Greenspire Littleleaf Linden	B & B	60mm Cal	12.0m x 8.0m
ELM	10	Ulmus americana 'Brandon'	Brandon American Elm	B & B	60mm Cal	12.0 x 8.0m

DECIDUOUS SHRUBS	QTY	BOTANICAL NAME	COMMON NAME	SIZE	ROOT	MATURE SIZE (HT. X SPR.)
Rbb	18	Berberis thunbergii 'Gentry' TM	Royal Burgundy Japanese Barberry	#2	Potted	0.6m x 1.0m
Gca	9	Caragana frutex 'Globosa'	Globe Caragana	#2	Potted	1.0m x 1.0m
Gfs	54	Spiraea japonica 'Goldflame'	Goldflame Japanese Spirea	#2	Potted	0.8m x 0.8m
Mcs	4	Spiraea x bumalda 'Wa buma'	Magic Carpet Spirea	#2	Potted	0.6m x 0.8m
Dec	54	Viburnum opulus 'Nanum'	Dwarf European Cranberrybush	#2	Potted	0.6m x 0.8m

GRASSES	QTY	BOTANICAL NAME	COMMON NAME	SIZE	ROOT	MATURE SIZE (HT. X SPR.)
Frg	20	Calamagrostis x acutiflora 'Karl Foerster'	Karl Foerster Feather Reed Grass	#2	Potted	1.2m x 0.8m

NOTES

- REFER TO CIVIL ENGINEERING DRAWINGS FOR GRADING INFORMATION AND LAYOUT.
- ALL UTILITIES ARE SHOWN AS INFORMATION ONLY. CONTRACTOR TO CONFIRM LOCATION OF ALL UTILITIES PRIOR TO CONSTRUCTION.
- CONTRACTOR TO STAKE OUT LOCATION OF ALL WORKS FOR REVIEW BY CONTRACT ADMINISTRATOR PRIOR TO ANY REMOVALS OR CONSTRUCTION.
- CONTRACTOR SHALL CONFIRM ALL DIMENSIONS ON SITE AND REPORT ANY DISCREPANCIES TO THE CONTRACT ADMINISTRATOR PRIOR TO CONSTRUCTION.
- DURING CONSTRUCTION CONTRACTOR TO PROTECT TO ROCKYVIEW COUNTY STANDARDS ALL EXISTING BUILDINGS, ABOVE AND BELOW GROUND UTILITIES, PAVING, CURBS, SIDEWALKS, FENCING, PLANT MATERIAL, AND BOLLARDS TO REMAIN. ANY AND ALL AREAS DAMAGED DURING CONSTRUCTION TO BE REPAIRED IN ACCORDANCE WITH ROCKYVIEW COUNTY STANDARD CONSTRUCTION SPECIFICATIONS AT NO COST TO THE ROCKYVIEW COUNTY.
- ALL WORK TO BE DONE IN ACCORDANCE WITH ROCKYVIEW COUNTY STANDARDS UNLESS OTHERWISE NOTED.
- ALL PLANT MATERIAL IS TO BE NURSERY GROWN STOCK AND SHALL MEET OR EXCEED THE SPECIFICATIONS OF THE CANADIAN NURSERY TRADES ASSOCIATION (CNTA) FOR SIZE, HEIGHT, SPREAD, GRADING, QUALITY, AND METHOD OF CULTIVATION.

REVISIONS

No.	DATE	DESCRIPTION	APPROVED BY
8			
7			
6			
5			
4			
3			
2			
1			

ISSUED

No.	DATE	DESCRIPTION	APPROVED BY
A	2021-06-08	ISSUED FOR GREEN NK	RM
B	2022-02-01	ISSUED FOR DEVELOPMENT PERMIT	RM
C	2022-04-01	ISSUED FOR TENDER	RM
D	2022-05-31	ISSUED FOR QA/QC	RM
E	2022-08-09	ISSUED FOR QA/QC	RM
F	2022-11-28	ISSUED FOR QA/QC	RM
G	2022-12-23	ISSUED FOR QA/QC	RM
H			

CONSULTANTS

wsp
WSP Canada Inc.
237 4th Avenue SW, Suite 3300
Calgary, AB, Canada T2P 4K3
t:403.243.8380 | f:403.243.0823
www.wsp.com

SEAL

PROJECT TITLE

COSTCO

COSTCO SPRINGBANK

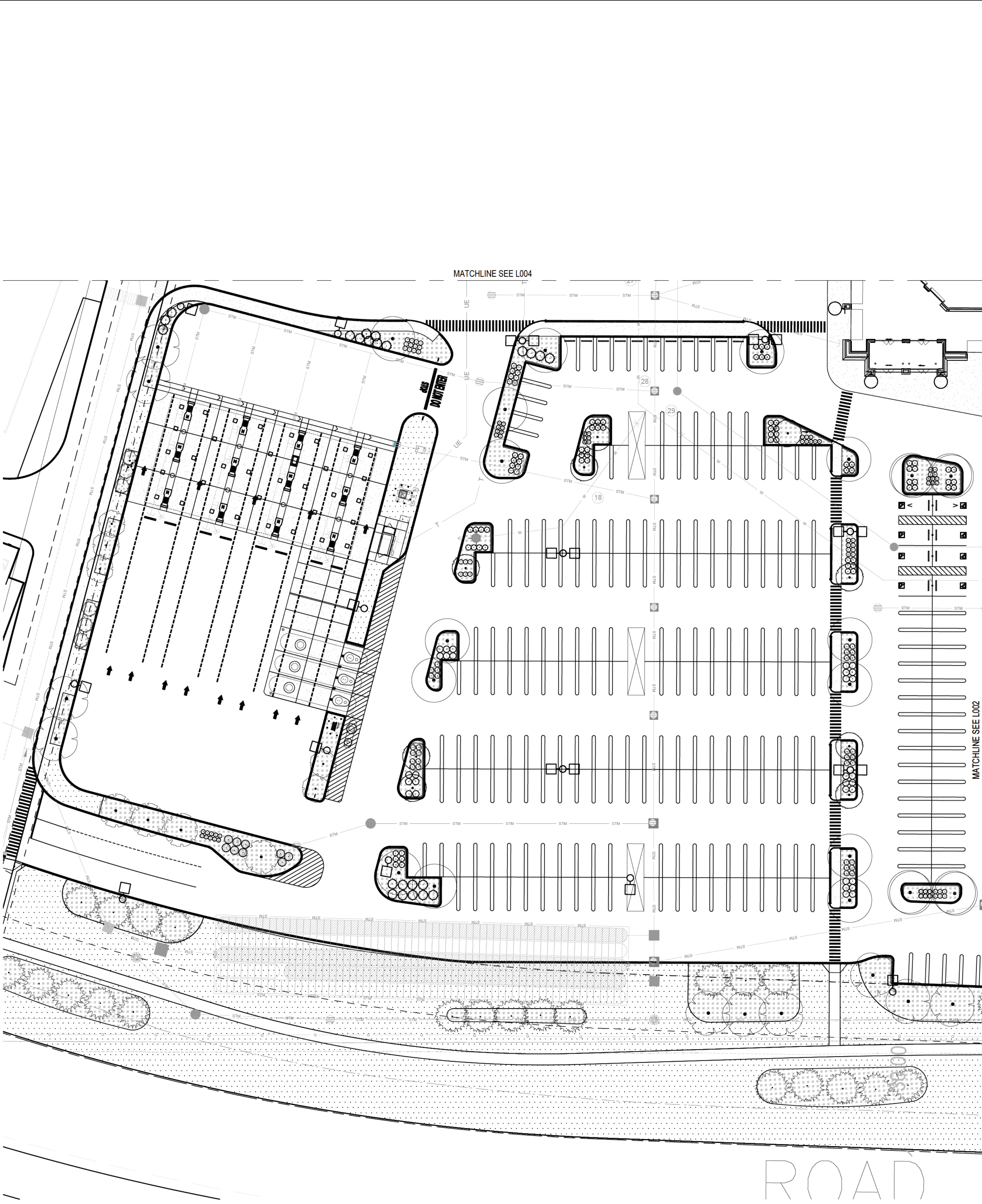
SPRINGBANK, ALBERTA

SHEET TITLE

LANDSCAPE AREA A

SCALE 0 5 10 15 20m

DRAWN BY	DESIGNED BY	PROJECT NUMBER
CV/KF	CV	211-01257-00
CHECKED BY	APPROVED BY	DATE
RM	RM	2022-12-23
DRAWING NUMBER	ISSUED	REVISION
L002	G	



1 LANDSCAPE AREA B
L003 SCALE: 1:400

LANDSCAPE LEGEND

- SOD - REFER TO NOTES, SHEET L001
- BARK MULCH - INSTALLED IN PLANTING BEDS - REFER TO PLANTING NOTES AND DETAILS, SHEET L006
- TREES
- SIBERIAN LARCH
 - COLUMNAR COLORADO SPRUCE
 - BLUE COLORADO SPRUCE
 - PONDEROSA PINE
 - OHIO BUCKEYE
 - NOBILITY WHITE ASH
 - PATMORE GREEN ASH
 - RUSSIAN MOUNTAIN ASH
 - IVORY SILK TREE LILAC
 - GREENSPIRE LINDEN
 - BRANDON ELM
- SHRUBS / GRASSES
- ROYAL BURGUNDY BARBERRY
 - GLOBE CARAGANA
 - GOLD DROP POTENTILLA
 - GOLDFLAME SPIREA
 - MAGIC CARPET SPIREA
 - DWARF KOREAN LILAC
 - DWARF EUROPEAN CRANBERRYBUSH
 - KARL FOERSTER FEATHER REED GRASS
 - PRINCE OF WALES JUNIPER

CIVIL LEGEND (REFERENCE ONLY)

- LEGAL
- PROPOSED PROPERTY LINE
- UTILITY
- GAS LINE
 - POWER SERVICES
 - SANITARY
 - STORMWATER
 - WATER
 - HYDRANT
 - VALVE
 - MANHOLE
 - CATCHBASIN
 - LIGHT STANDARD
 - TRANSFORMERS

PLANT SCHEDULE AREA B

CONIFEROUS TREES	QTY	BOTANICAL NAME	COMMON NAME	CONTAINER	SIZE	MATURE SIZE (HT. X SPR.)
SLR	7	Larix s birica	Siberian Larch	B & B	2.5m Ht.	15.0m x 6.0m
CCS	6	Picea pungens 'Fastigiata'	Columnar Colorado Spruce	B & B	2.5m Ht.	6.0m x 3.0m
CBS	15	Picea pungens 'Glaucia'	Colorado Blue Spruce	B & B	2.5m Ht.	15.0m x 6.0m
DECIDUOUS TREES	QTY	BOTANICAL NAME	COMMON NAME	CONTAINER	SIZE	MATURE SIZE (HT. X SPR.)
OHB	4	Aesculus glabra	Ohio Buckeye	B & B	60mm Cal	8.0m x 6.0m
NWA	14	Fraxinus americana 'Jefvis' TM	Nobility White Ash	B & B	60mm Cal	15.0m x 8.0m
RMA	5	Sorbus aucuparia 'Rossica Major'	Russian Mountain Ash	B & B	60mm Cal	6.0m x 5.0m
JTL	9	Syringa reticulata 'Ivory Si k'	Ivory Si k Japanese Tree Lilac	B & B	60mm Cal	6.0m x 5.0m
GLL	10	Tilia cordata 'Greenspire'	Greenspire Littleleaf Linden	B & B	60mm Cal	12.0m x 8.0m
ELM	4	Ulmus americana 'Brandon'	Brandon American Elm	B & B	60mm Cal	12.0 x 8.0m
CONIFEROUS SHRUBS	QTY	BOTANICAL NAME	COMMON NAME	SIZE	ROOT	MATURE SIZE (HT. X SPR.)
Pwj	23	Juniperus horizontalis 'Prince of Wales'	Prince Of Wales Juniper	#2	Potted	0.2m x 2.0 m
Dmp	30	Pinus mugo 'Pumilio'	Dwarf Mugo Pine	#2	Potted	1.2m x 1.2m
DECIDUOUS SHRUBS	QTY	BOTANICAL NAME	COMMON NAME	SIZE	ROOT	MATURE SIZE (HT. X SPR.)
Rbb	34	Berberis thunbergii 'Gentry' TM	Royal Burgundy Japanese Barberry	#2	Potted	0.6m x 1.0m
Gca	46	Caragana frutex 'Globosa'	Globe Caragana	#2	Potted	1.0m x 1.0m
Gdp	31	Potentilla fruticosa 'Gold Drop'	Gold Drop Potentilla	#2	Potted	0.6m x 1.0m
Gfs	32	Spiraea japonica 'Goldflame'	Goldflame Japanese Spirea	#2	Potted	0.8m x 0.8m
Mcs	4	Spiraea x bumalda 'Walburna'	Magic Carpet Spirea	#2	Potted	0.6m x 0.8m
Dkl	9	Syringa meyeri 'Palibin'	Dwarf Korean Lilac	#2	Potted	1.5m x 1.5m
Dec	6	Viburnum opulus 'Nanum'	Dwarf European Cranberrybush	#2	Potted	0.6m x 0.8m
GRASSES	QTY	BOTANICAL NAME	COMMON NAME	SIZE	ROOT	MATURE SIZE (HT. X SPR.)
Frg	38	Calamagrostis x acutiflora 'Karl Foerster'	Karl Foerster Feather Reed Grass	#2	Potted	1.2m x 0.8m

- NOTES
- REFER TO CIVIL ENGINEERING DRAWINGS FOR GRADING INFORMATION AND LAYOUT.
 - ALL UTILITIES ARE SHOWN AS INFORMATION ONLY. CONTRACTOR TO CONFIRM LOCATION OF ALL UTILITIES PRIOR TO CONSTRUCTION.
 - CONTRACTOR TO STAKE OUT LOCATION OF ALL WORKS FOR REVIEW BY CONTRACT ADMINISTRATOR PRIOR TO ANY REMOVALS OR CONSTRUCTION.
 - CONTRACTOR SHALL CONFIRM ALL DIMENSIONS ON SITE AND REPORT ANY DISCREPANCIES TO THE CONTRACT ADMINISTRATOR PRIOR TO CONSTRUCTION.
 - DURING CONSTRUCTION CONTRACTOR TO PROTECT TO ROCKYVIEW COUNTY STANDARDS ALL EXISTING BUILDINGS, ABOVE AND BELOW GROUND UTILITIES, PAVING, CURBS, SIDEWALKS, FENCING, PLANT MATERIAL, AND BOLLARDS TO REMAIN. ANY AND ALL AREAS DAMAGED DURING CONSTRUCTION TO BE REPAIRED IN ACCORDANCE WITH ROCKYVIEW COUNTY STANDARD CONSTRUCTION SPECIFICATIONS AT NO COST TO THE ROCKYVIEW COUNTY.
 - ALL WORK TO BE DONE IN ACCORDANCE WITH ROCKYVIEW COUNTY STANDARDS UNLESS OTHERWISE NOTED.
 - ALL PLANT MATERIAL IS TO BE NURSERY GROWN STOCK AND SHALL MEET OR EXCEED THE SPECIFICATIONS OF THE CANADIAN NURSERY TRADES ASSOCIATION (CNTA) FOR SIZE, HEIGHT, SPREAD, GRADING, QUALITY, AND METHOD OF CULTIVATION.

REVISIONS		
No.	DATE	DESCRIPTION
8		
7		
6		
5		
4		
3		
2		
1		

ISSUED		
No.	DATE	DESCRIPTION
A	2021-06-08	ISSUED FOR GREEN NK
B	2022-02-01	ISSUED FOR DEVELOPMENT PERMIT
C	2022-04-01	ISSUED FOR TENDER
D	2022-05-31	ISSUED FOR QA/QC
E	2022-08-09	ISSUED FOR QA/QC
F	2022-11-28	ISSUED FOR QA/QC
G	2022-12-23	ISSUED FOR QA/QC
H		

CONSULTANTS

wsp

WSP Canada Inc.
237 4th Avenue SW, Suite 3300
Calgary, AB, Canada T2P 4K3
t:403.243.8380 | f:403.243.0823
www.wsp.com

SEAL

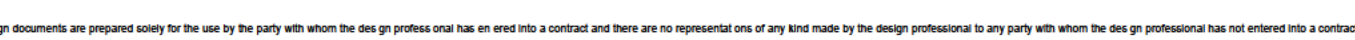
PROJECT TITLE

COSTCO

COSTCO SPRINGBANK

SPRINGBANK, ALBERTA

SHEET TITLE		
LANDSCAPE AREA B		
SCALE 0 5 10 15 20m		
DRAWN BY	DESIGNED BY	PROJECT NUMBER
CV/KF	CV	211-01257-00
CHECKED BY	APPROVED BY	DATE
RM	RM	2022-12-23
DRAWING NUMBER	ISSUED	REVISION
L003	G	



DRAWN BY CV/KF	DESIGNED BY CV	PROJECT NUMBER 211-01257-00	
CHECKED BY RM	APPROVED BY RM	DATE 2022-12-23	
DRAWING NUMBER L004		ISSUED G	REVISION

NOTE:
These design documents are prepared solely for the use by the party with whom the design professional has entered into a contract and there are no representations of any kind made by the design professional to any party with whom the design professional has not entered into a contract.