



# Open House Workshop Sessions

Springbank Heritage Club  
April 28, 2022



ROCKY VIEW COUNTY



# Welcome!

## Tonight's Objectives

1. To provide an update on the status of the draft ASPs
2. To obtain your feedback on how the draft ASPs could better align with community aspirations
3. To answer your questions
4. To provide an overview of next steps

## Agenda

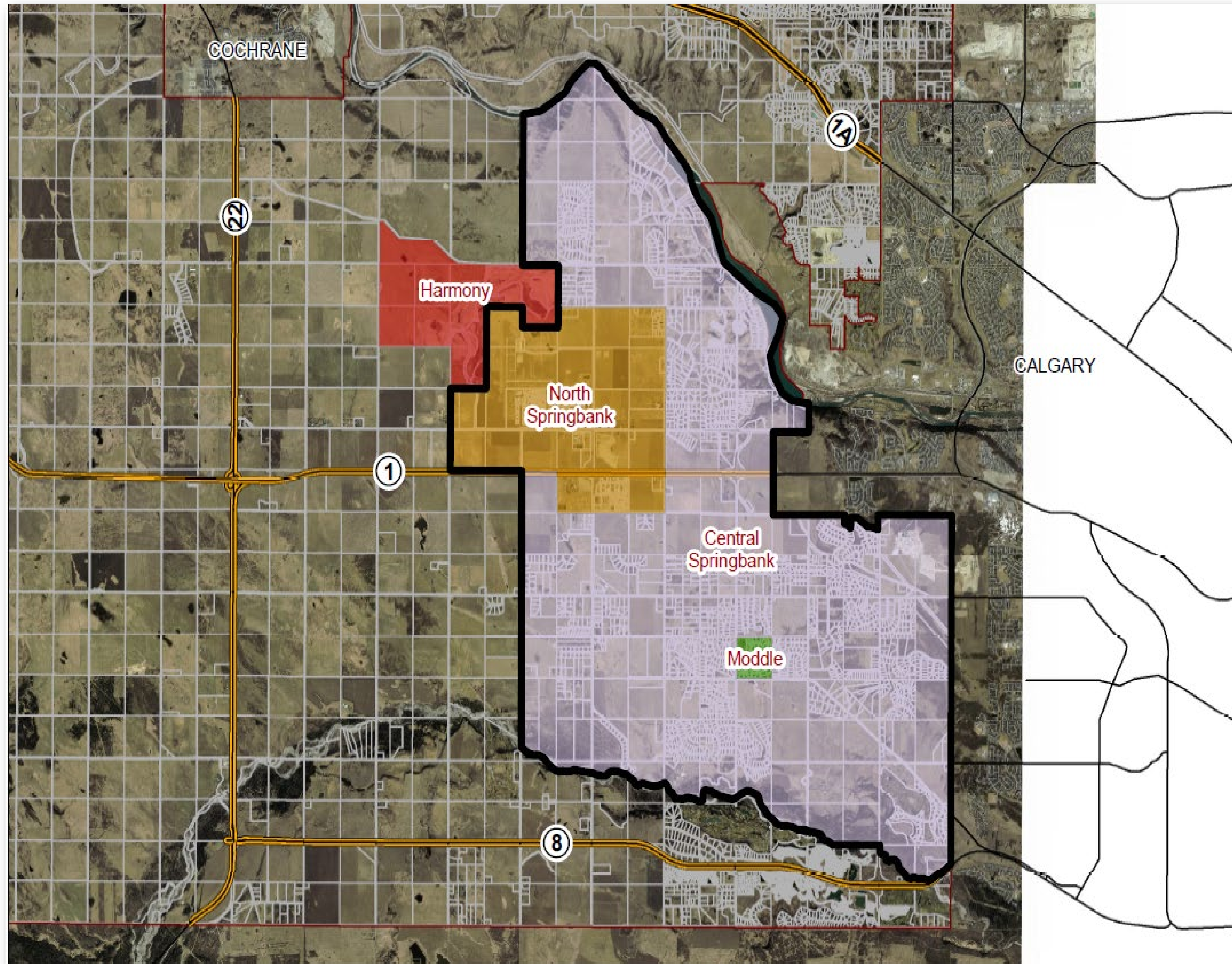
- Introductions & Project Update
- Workshop Session
- Report Back
- Next Steps
- Questions



ROCKY VIEW COUNTY



# Background



## Existing ASPs

- Moddle ASP (1998)
- North Springbank ASP (1999)
- Central Springbank ASP (2001)



ROCKY VIEW COUNTY



# Background

## Why are we reviewing the ASPs?

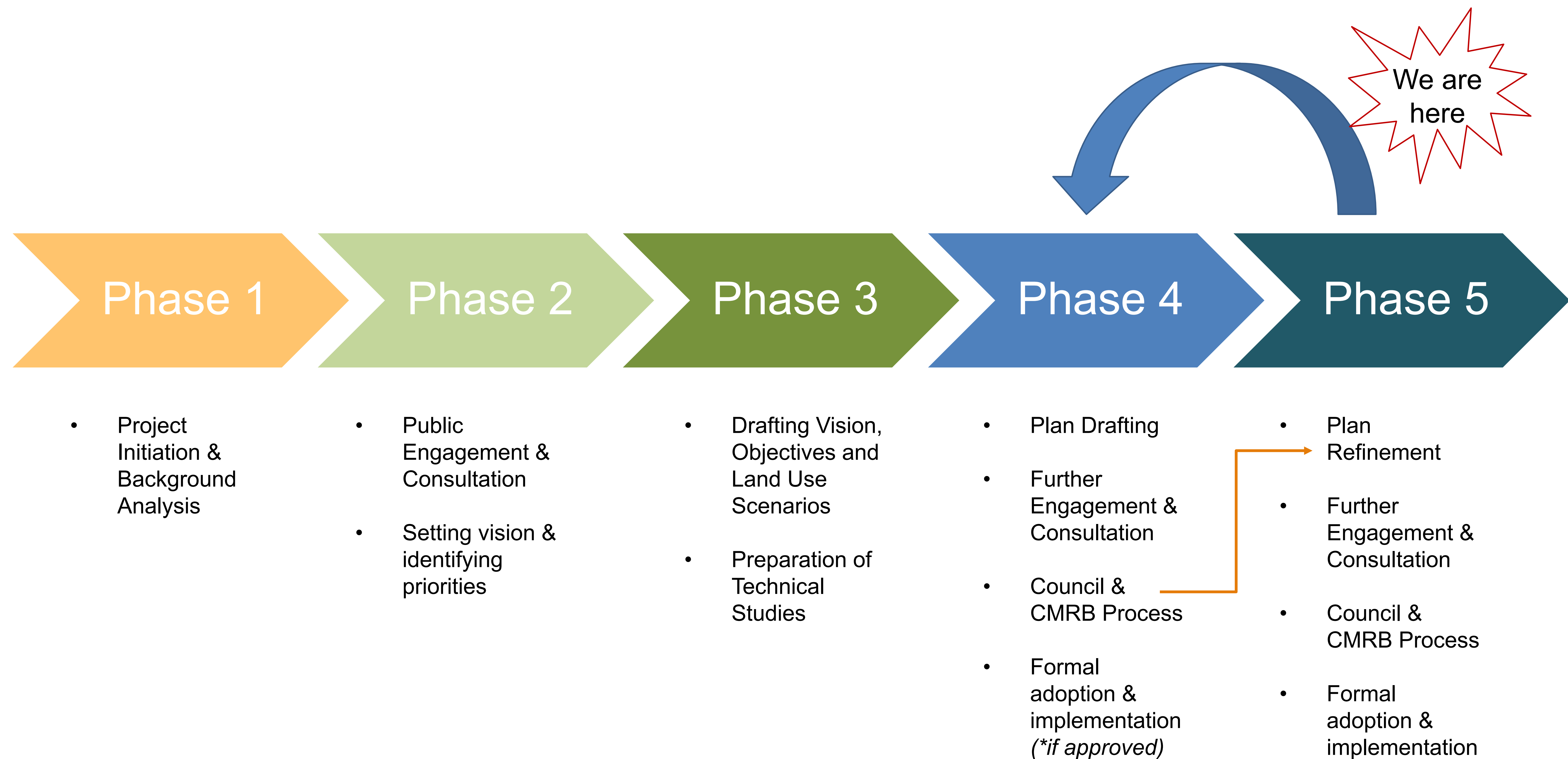
- To ensure the ASPs reflect the current community vision
- Springbank has grown and conditions have changed
- To align with related plans, policies and studies



ROCKY VIEW COUNTY



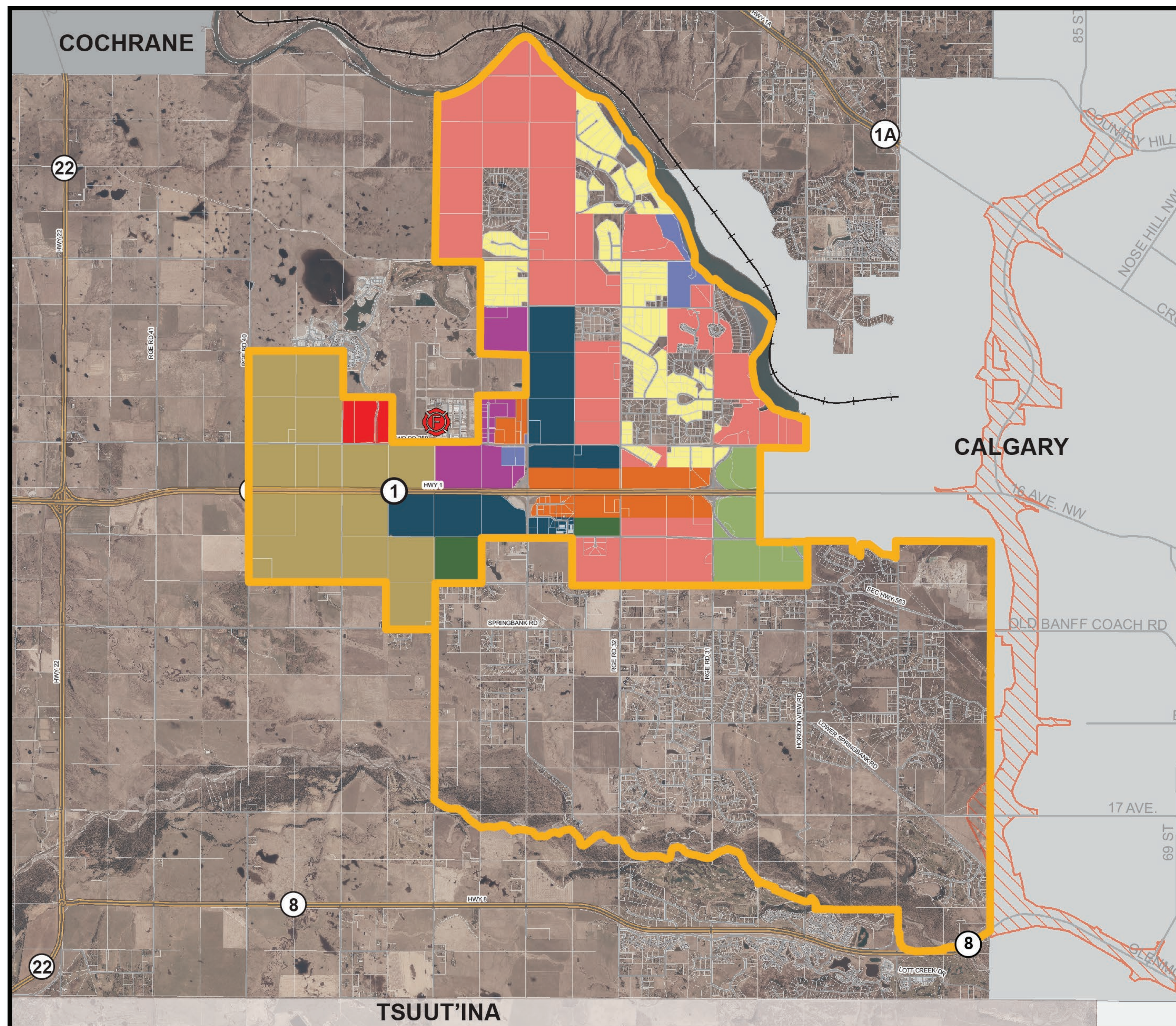
# Process Overview



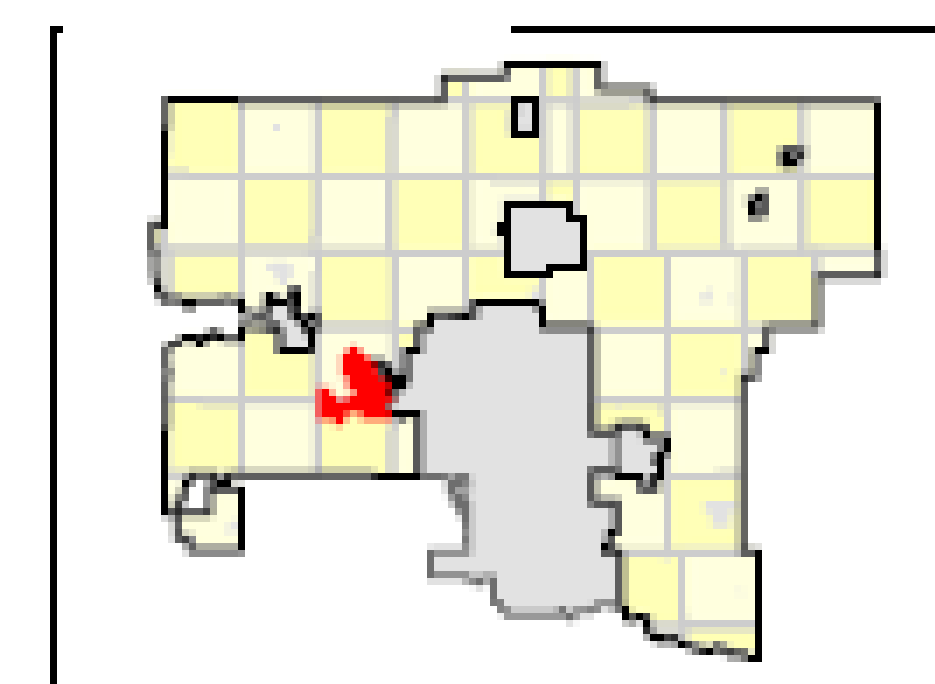
ROCKY VIEW COUNTY



# North Springbank ASP – Draft



-  Fire Hall
-  ASP Boundary
-  Built Out Areas
-  Country Residential Infill
-  Cluster Live-Work
-  Future Expansion Areas
-  Business Industrial/Commercial
-  Business Transition
-  Institutional & Community Services
-  Business Commercial
-  Cluster Residential Development
-  Hamlet Interface Area
-  Urban Interface Area
-  Regional Mobility Corridor
-  Utility Right of Way



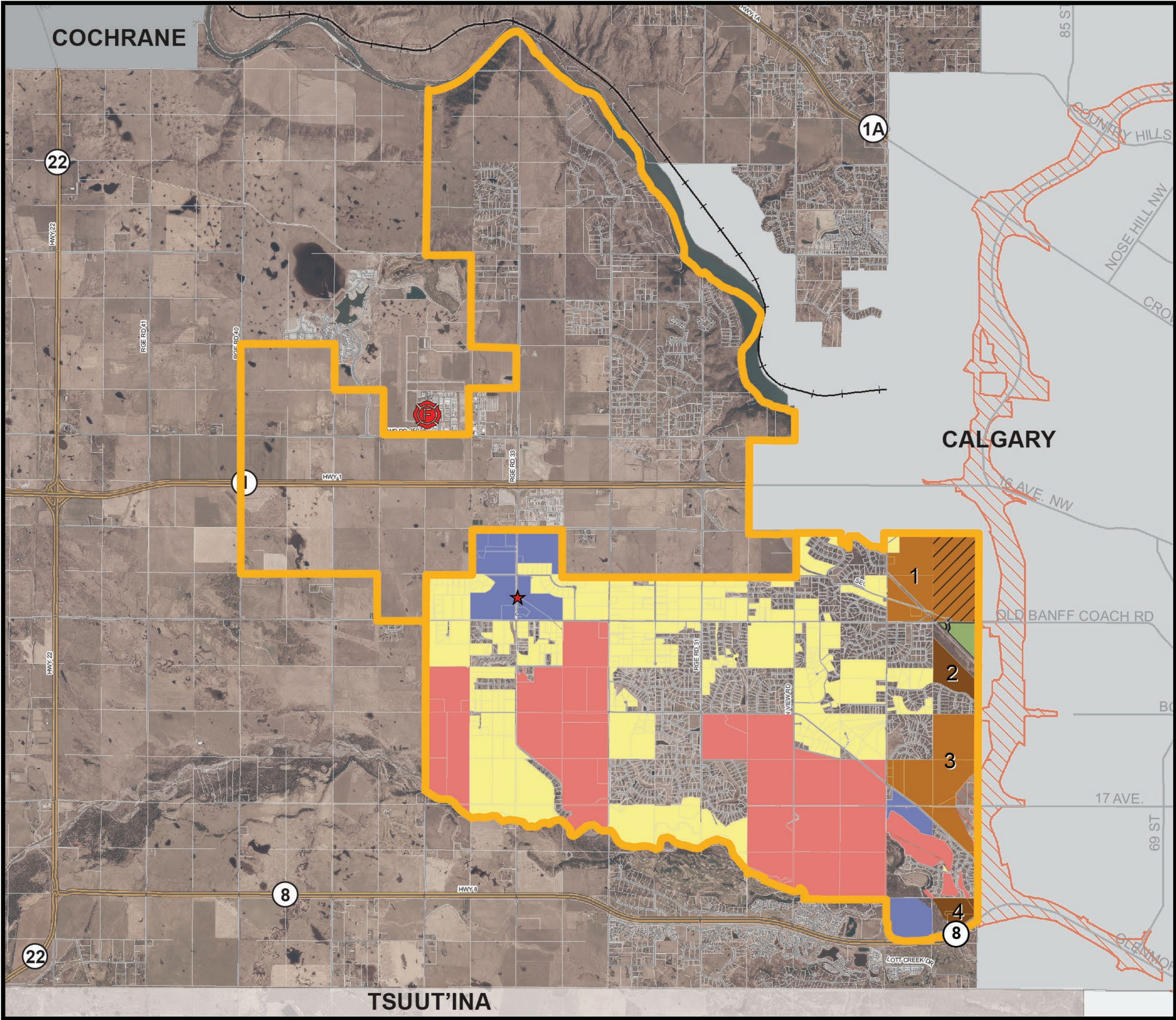
This map is conceptual in nature. No measurements or area calculations should be taken from this map.



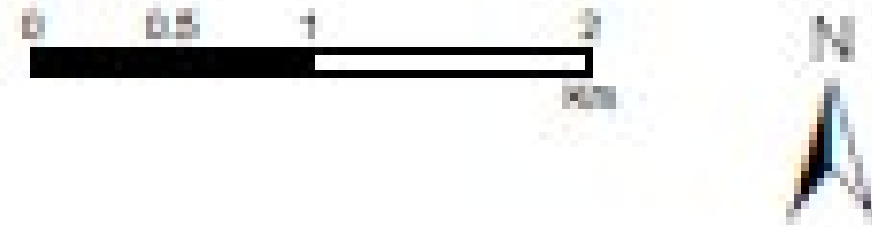
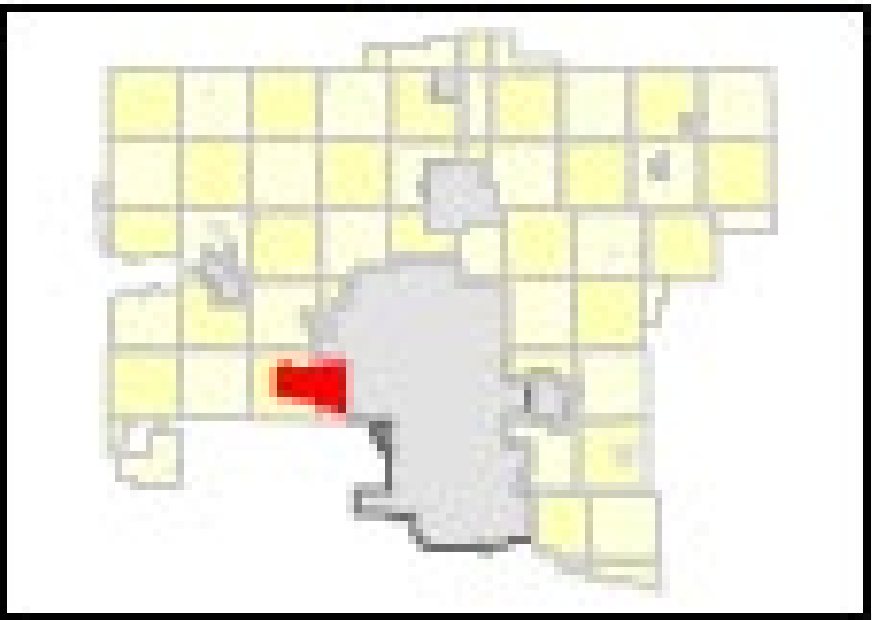
ROCKY VIEW COUNTY



# South Springbank ASP – Draft

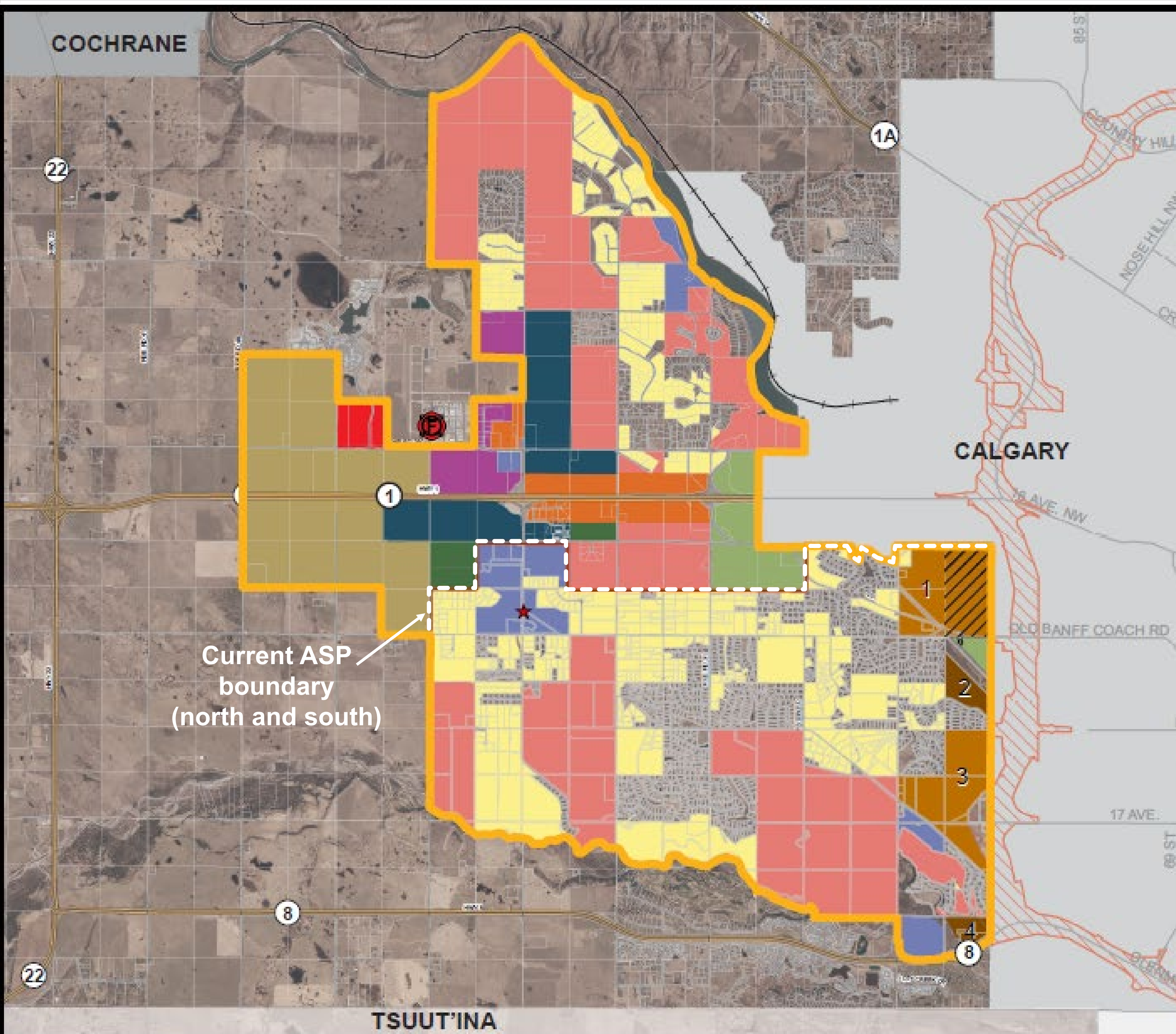


- ★ Community Core
- Regional Mobility Corridor
- ASP Boundary
- Built Out Areas
- Limited Servicing Interim Uses
- Country Residential Infill
- Institutional & Community Services
- Cluster Residential Development
- Urban Interface Area
- Special Planning Area
- Transportation and Utility Corridor



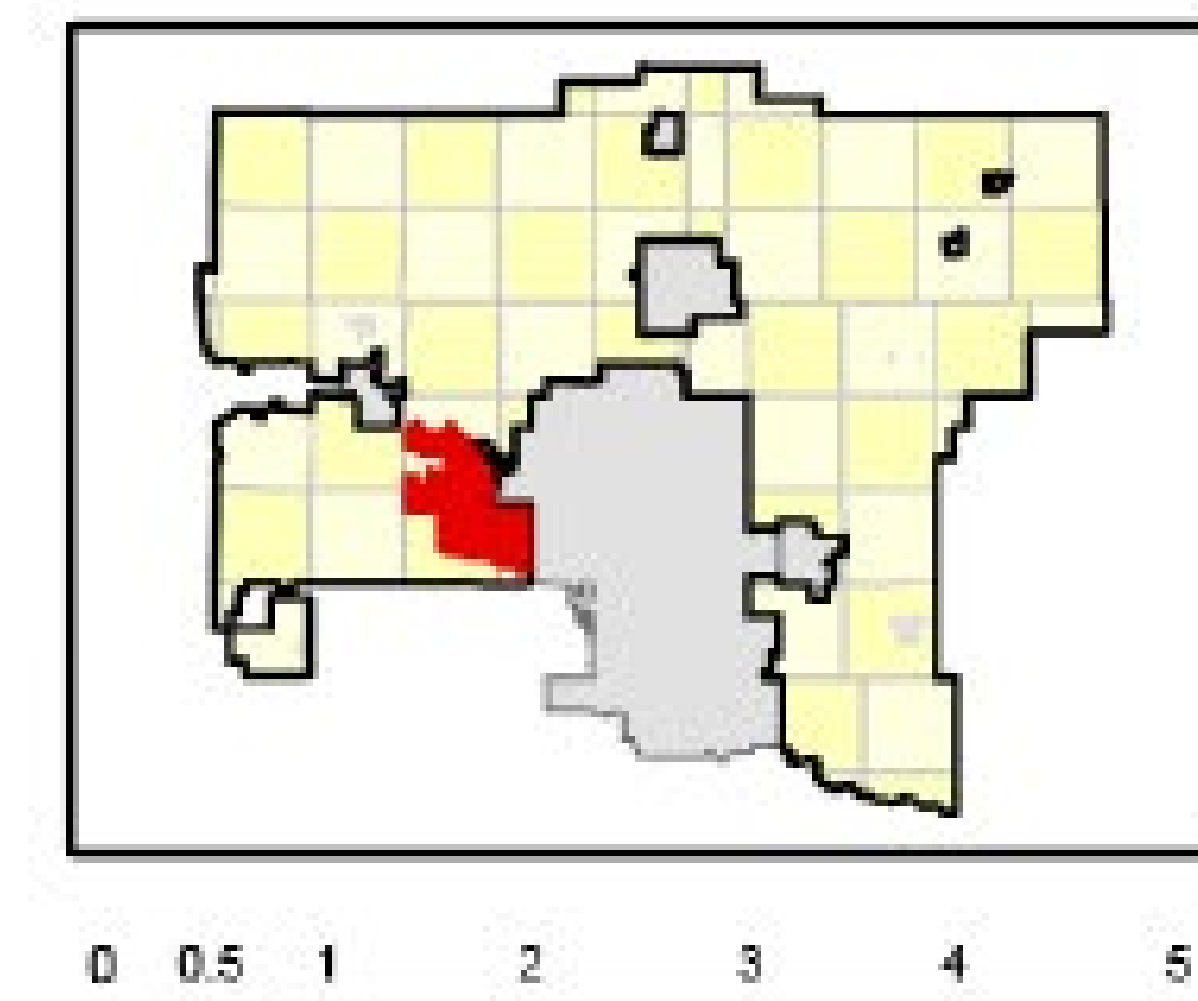
This map is conceptual in nature. No measurements or area calculations should be taken from this map.





-  Proposed ASP Boundary
-  Built Out Areas
-  Country Residential
-  Cluster Live-Work
-  Future Expansion Areas
-  Business Industrial/Commercial
-  Business Transition
-  Institutional & Community Services
-  Business Commercial
-  Cluster Residential Development
-  Hamlet Interface Area
-  Urban Interface Area
-  Special Planning Area
-  Limited Servicing Interim Uses
-  Community Core
-  Fire Hall
-  Regional Mobility Corridor
-  Transportation and Utility Corridor

# Combined Land Use Strategy Map



*\*consolidated map of proposed Springbank ASP Land Use Strategy (north and south) for discussion purposes.*

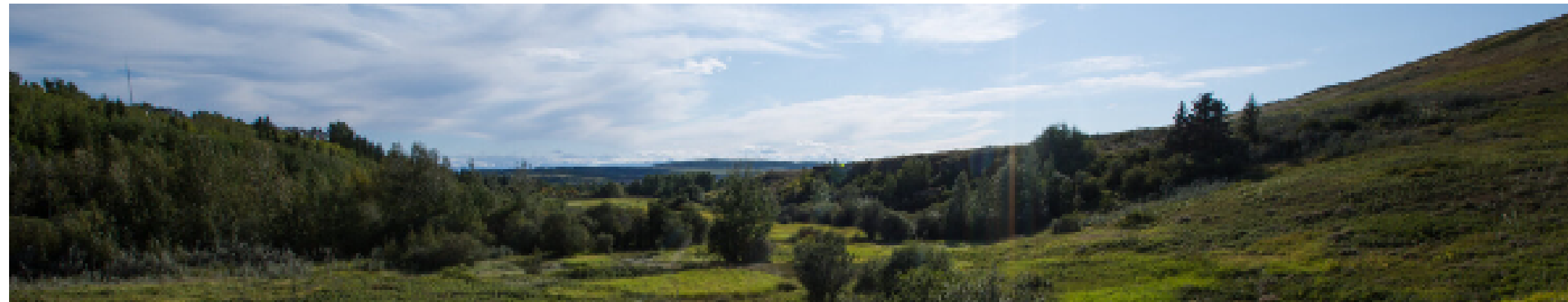


ROCKY VIEW COUNTY



## IREF Applications

The IREF establishes evaluation criteria and procedures for the Board to follow in the review and approval of local statutory plans and amendments of regional significance to ensure they are consistent with the long-term regional interests identified in the Interim Growth Plan.



The following are applications submitted by municipalities in the Calgary Metropolitan Region from 2019 to date.

### 2022

2022-01 City of Chestermere: Clearwater Park Area Structure Plan Context Maps - **Approved**

2022-02 Town of Strathmore: Legacy Farm Area Structure Plan Context Maps - **No Longer Valid**

2022-02 Foothills County: Foothills Crossing Area Structure Plan Context Maps - **Pending**

### 2021

2021-01 City of Airdrie: Airdrie City Plan & South Airdrie Area Structure Plan (Amendments) Context Maps - **Withdrawn**

2021-02 Rocky View County: North Springbank Area Structure Plan Context Maps - **Refused**

2021-03 Rocky View County: South Springbank Area Structure Plan Context Maps - **Refused**

2021-04 Rocky View County: Municipal Development Plan Context Maps - **Refused**

2021-05 City of Airdrie: Airdrie City Plan & South Airdrie Area Structure Plan (Amendments) Context Maps - **Approved**

2021-06 City of Airdrie: Southeast Yankee Valley Boulevard Community Area Structure Plan Context Maps - **Approved**

2021-07 City of Airdrie: West Hills Neighbourhood Structure Plan and Community Area Structure Plan (Amendment) Context Maps - **Approved**

2021-08 City of Airdrie: Southwest Community Area Structure Plan Context Maps - **Approved**

2021-09 Foothills County: Heritage Pointe Area Structure Plan (Amendment) Context Maps - **Approved**

2021-10 Rocky View County: Elbow View Area Structure Plan Context Maps - **Withdrawn**

2021-11 Rocky View County: Hwy 1-Old Banff Coach Rd Central Springbank ASP Amendment Context Maps - **Refused**



# CMRB Referral

March 1, 2021

- Council granted 2<sup>nd</sup> reading and referral to CMRB

April 23, 2021

- Referral to CMRB

June 2, 2021

- CMRB Admin recommendation (approval)

July 23, 2021

- CMRB Board Meeting (rejected)



ROCKY VIEW COUNTY



# ASP Refinements

## Amended Terms of Reference:

- Approved December 14, 2021
- Council direction to revisit the draft Springbank plans
- Opportunity to undertake further community engagement

## Goals of ASP Refinements:

- Review and consider Public Hearing amendments;
- Returning to a single ASP;
- To better align with community opinion;
- To resolve intermunicipal concerns (where possible); and,
- Consistency with regional planning policy.





# Engagement Opportunities

## Virtual Coffee Chats

March 30 to April 14  
9 Sessions, 54 attendees

## Online Survey

Open to May 13

## Written Submissions

Accepting until May 13

## Tonight's Sessions

3 sessions

### Engagement Summary Report

Regional Planning Policy  
(Growth Plan)

Intermunicipal Feedback

Considerations for ASP  
Refinements

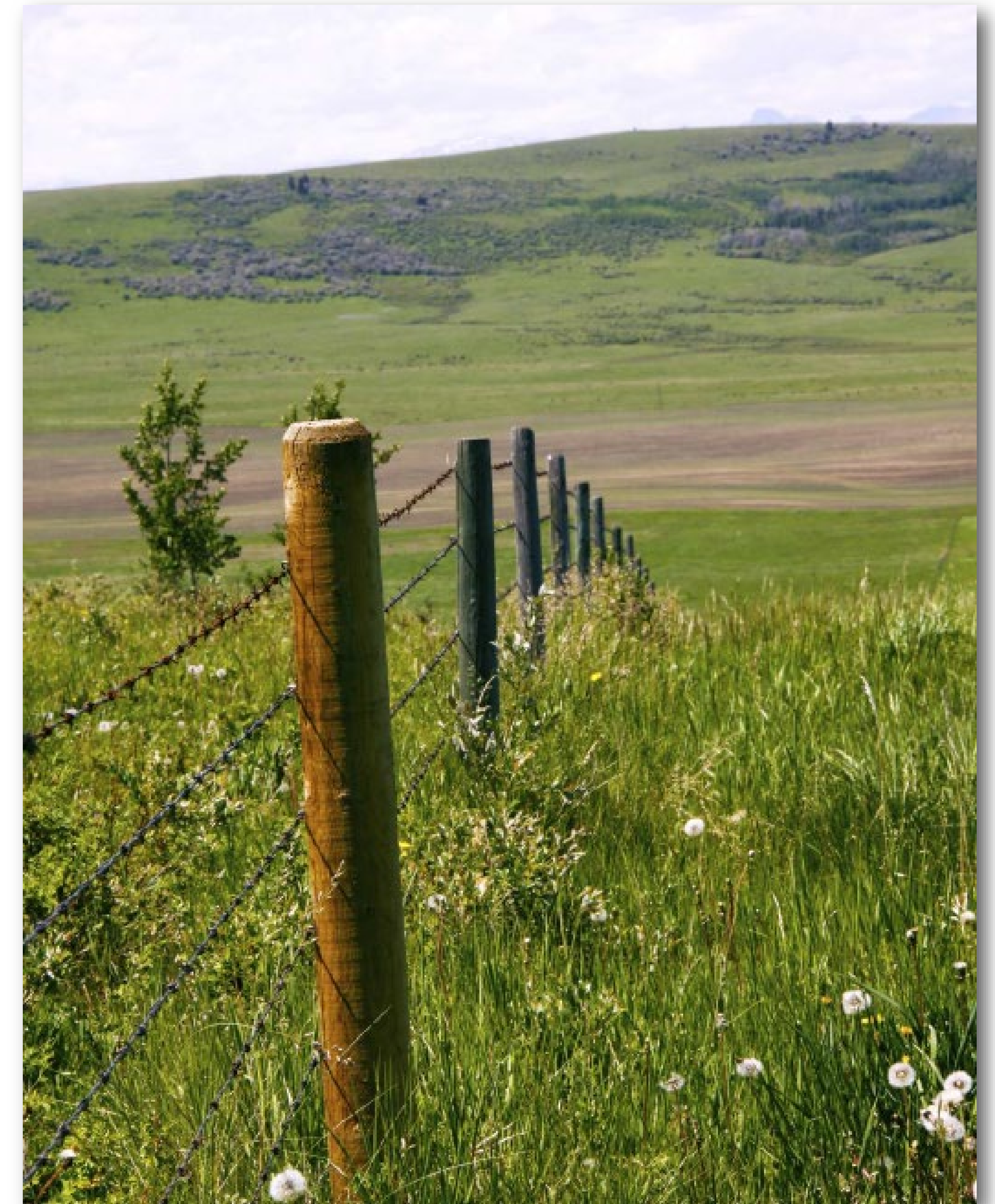


ROCKY VIEW COUNTY



# Next Steps

- Intermunicipal collaboration (on-going)
- Gathering feedback until May 13
- Prepare engagement summary report
- Prepare refinements to ASP(s)



ROCKY VIEW COUNTY



# Questions



ROCKY VIEW COUNTY



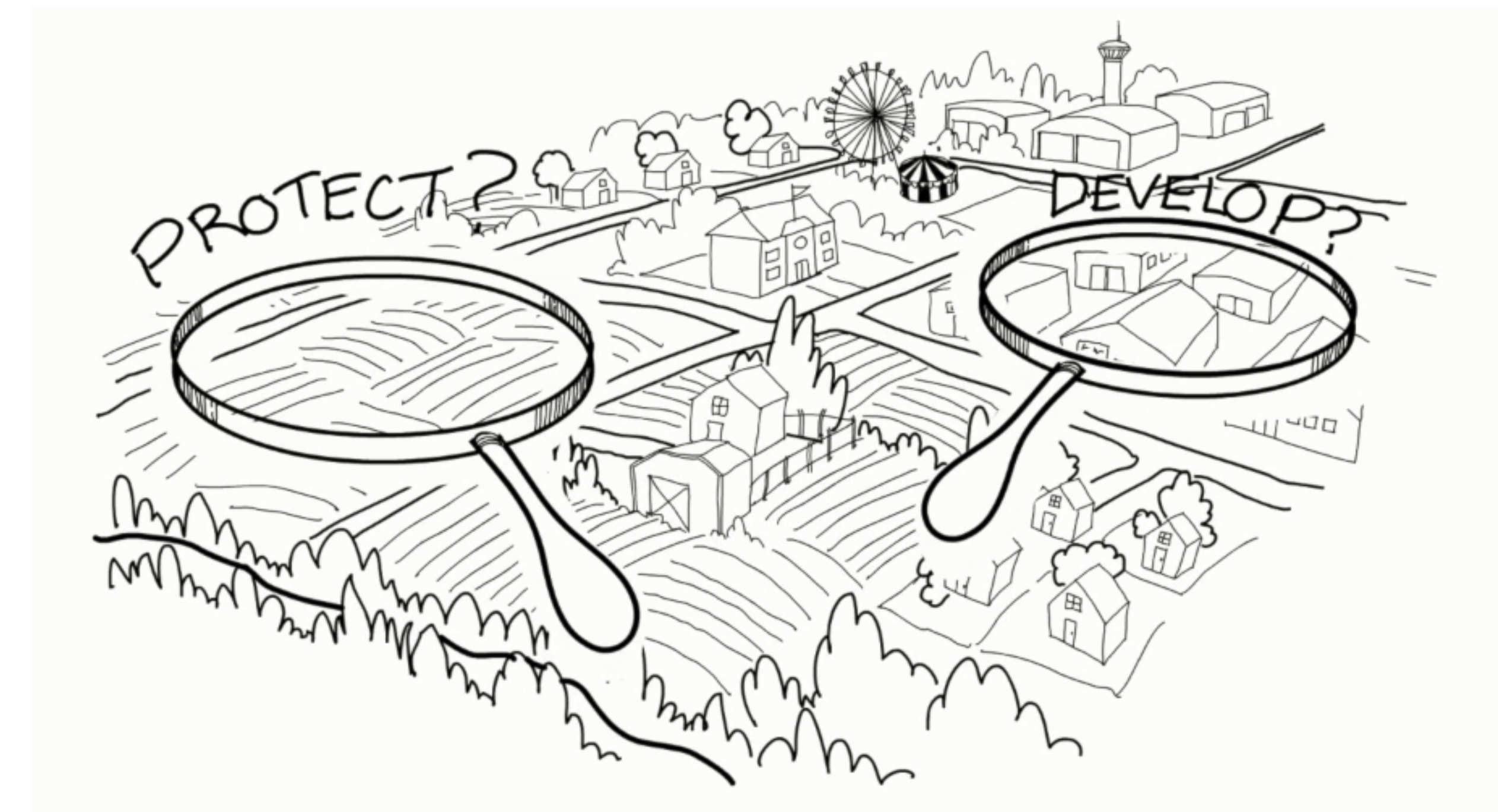
# Workshop Agendas

Workshop #1: 5:15 PM – 6:15 PM

Workshop #2: 6:30 PM - 7:30 PM

Workshop #3: 7:45 PM - 8:45 PM

- Introduction
- General Questions
- Workshop Table Discussions
- Report Back
- Closing



ROCKY VIEW COUNTY



# Discussion Questions

We asked these questions in the coffee chat sessions and online survey:

1. Would you prefer one ASP to guide land use and development in the community or two?
2. What are your top priorities for the Springbank community?
3. Share your feedback on the following key areas:
  - A community core south of Highway 1 along Range Road 33 (area F)
  - Focusing business areas along the highway and surrounding the airport (areas C and D)
  - Future development lands south of Harmony (western edge of plan)
  - Areas for future consideration and planning (area E)
  - Location of interim uses (if any)

What else would you like to share with us?



ROCKY VIEW COUNTY





## Springbank ASP Webpage

- Get project updates
- Review current draft ASPs
- Review technical reports
- Sign up for project emails
- **Provide feedback.**

Planning Policy  
planning\_policy@rockyview.ca  
403-230-1401

[www.rockyview.ca/springbank-area-structure-plan](http://www.rockyview.ca/springbank-area-structure-plan)

**Please provide feedback by Friday, May 13th, 2022**



ROCKY VIEW COUNTY



Thank you for your  
participation!



ROCKY VIEW COUNTY