

MUNICIPAL DISTRICT OF ROCKY VIEW NO. 44

BYLAW C-3563-90

Page 1

A Bylaw of the Municipal District of Rocky View No. 44 to amend Bylaw C-1725-84.

WHEREAS the Council deems it desirable to amend the said Bylaw; and

WHEREAS the Council of the Municipal District of Rocky View No. 44 has received an application to amend Bylaw C-1725-84 to redesignate part of the NW-13-28-28-W4M from Agricultural Conservation (1) District to Direct Control District (with guidelines) as shown on the attached Schedule "A"; and

WHEREAS a notice was published on November 27th and December 4th, 1990 in the Rocky View Weekly, a newspaper circulating in the Municipal District of Rocky View No. 44 advising of the Public Hearing for December 11th, 1990; and

WHEREAS Council held a Public Hearing and have given consideration to the representations made to it in accordance with Section 139 and 140 of the Planning Act being Chapter P-9 of the Revised Statutes of Alberta 1980, amendments thereto.

NOW THEREFORE the Council enacts the following:

1. That Bylaw C-1725-84 be amended by redesignating part of the NW-13-28-28-W4M from Agricultural Conservation (1) District to Direct Control District (with guidelines) as shown on the attached Schedule "A" forming part of this Bylaw.
2. That all lands within part of the NW-13-28-28-W4M as shown on Schedule "A" forming part of this Bylaw are hereby redesignated to Direct Control District, in accordance with the following guidelines:

List of Permitted Uses

- Existing dwellings: 3 buildings with 4 dwelling units in each building.
- Communal cooling and dining facilities.
- Religious educational facilities for the exclusive use of the Colony residents.

List of Discretionary Uses

- Accessory buildings.
- Dwellings attached.

MUNICIPAL DISTRICT OF ROCKY VIEW NO. 44

BYLAW C-3563-90

Page 2

Minimum and Maximum Requirements

- Maximum number of dwelling units per dwelling attached: 5.
- Maximum number of dwelling attached buildings: 5.
- Maximum height of dwellings attached: 10 metres (32.81 feet).
- Minimum total floor area of a dwelling unit: 141.2 m. sq. (1520 ft. sq.). Maximum height of accessory buildings: 5.5 metres (18.04 feet).
- Maximum floor area of accessory buildings: 362 m. sq. (3900.00 ft. sq.).

Exterior Finish

- To the satisfaction of the Municipal Planning Commission.

3. The Bylaw comes into effect upon the date of its third reading.

File: 8313003

First reading passed in open Council, assembled in the City of Calgary, in the Province of Alberta, this 20th day of November, 1990, on a motion by Councillor Vincent.

Second reading passed in open Council, assembled in the City of Calgary, in the Province of Alberta, this 11th day of December, 1990, on a motion by Councillor Isley.

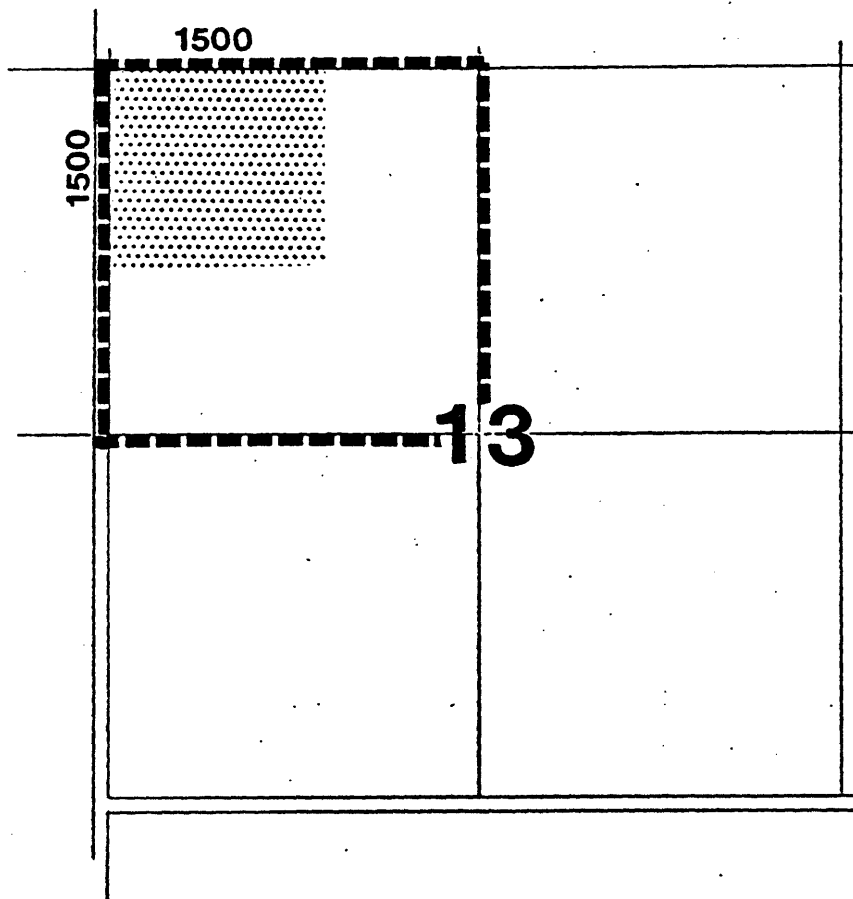
Third reading passed in open Council, assembled in the City of Calgary, in the Province of Alberta, this 11th day of December, 1990, on a motion by Councillor Vincent.


REEVE OR DEPUTY REEVE


MUNICIPAL SECRETARY

SCHEDULE "A"

BYLAW: C-3563-90



AMENDMENT:

FROM: Agricultural Conservation (1)

TO:

Direct Control District



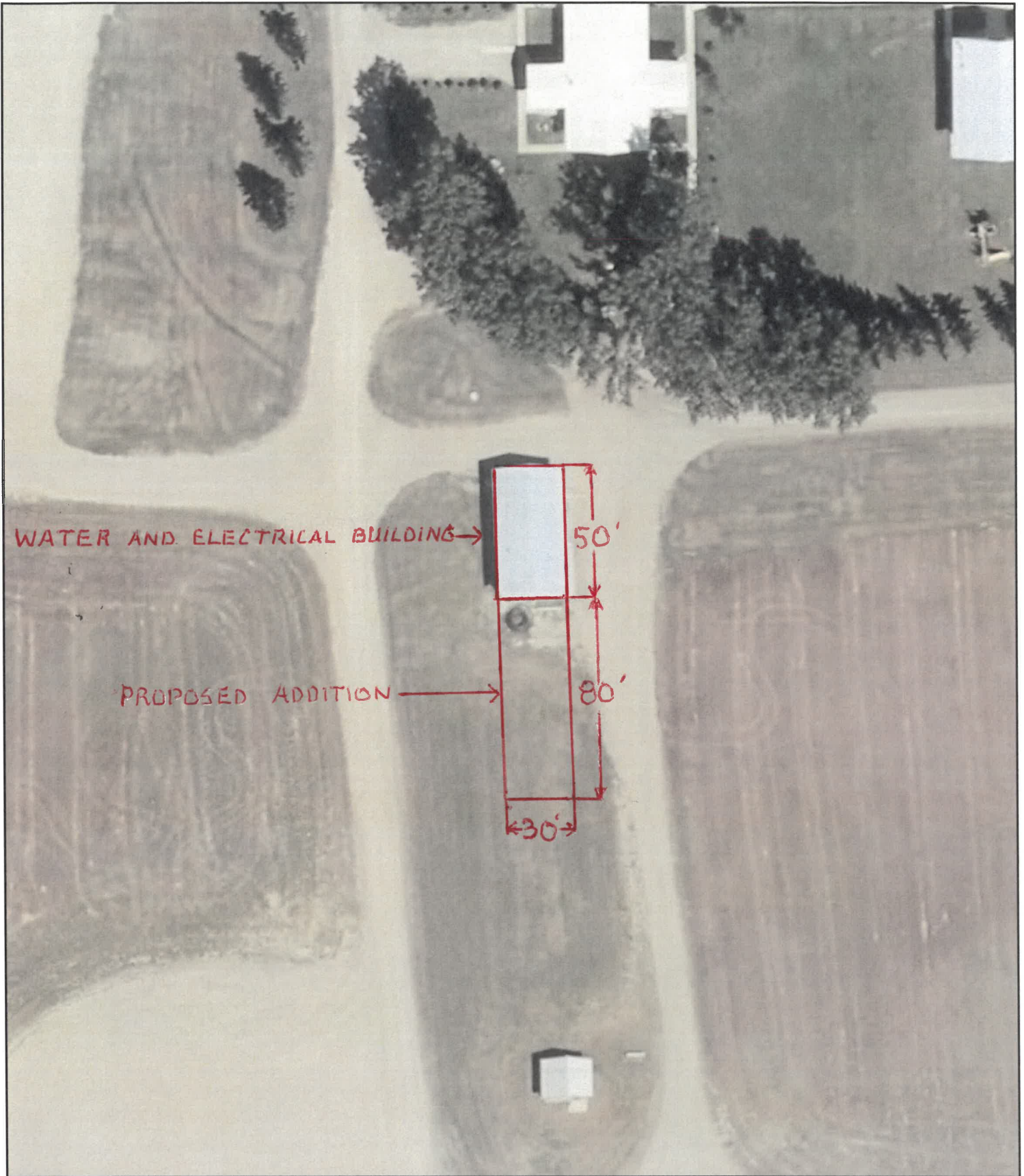
SUBJECT LAND: -----



LEGAL DESCRIPTION: NW-13-28-28-W4M

FILE: 8313003





WATER AND ELECTRICAL BUILDING →

50'

PROPOSED ADDITION →

80'

←30'→

1 inch = 58 feet



ROCKY VIEW COUNTY
Cultivating Communities

Information as depicted is subject to change, therefore Rocky View County assumes no responsibility for discrepancies after date of printing.



Printed: Oct 04, 2023