

# INFORMATION SHEET

## WEST BRAGG CREEK EMERGENCY ACCESS STUDY

### Introduction

Tetra Tech EBA Inc. has been retained by Rocky View County to conduct the initial planning for an emergency access route for the West Bragg Creek area. The purpose of this access will be to provide an alternate means of ingress and egress for first responders and residents to access and evacuate the West Bragg Creek area during an emergency event such as flooding or wildfires. The intent is for this access to be available during such events only, i.e., it is not intended to be a permanent access at this point in time.

### Study Area

The study area is the general West Bragg Creek area, including the Wintergreen residences extending towards:

- North boundary – Township Road 242 (Copithorne Pit access)
- East boundary – Highway 22
- South boundary – Rocky View County limits
- West boundary – Rocky View County limits

### Initial Route Options

Several route options have been developed to date with an initial screening completed to rule out those options (listed in grey) that do not provide a satisfactory level of response or evacuation time into and from the West Bragg Creek area. The options carried forward for further review are as listed in black (the colour denotes the routing shown on Figure 1 below).

- **Option 1 – Elk Valley Drive to Highway 66**
- **Option 2 – Wintergreen Road to Township Road 242 through Tsuu T'ina lands**
- *Option 3 – North and west route around Tsuu T'ina lands to Township Road 242*
- *Option 4 – North route around Tsuu T'ina lands to Highway 68*
- **Option 5 – Wintergreen Road to Redwood Meadows through Tsuu T'ina lands**
- *Option 6 – South route to Highway 66 through Kananaskis Country*
- **Option 7 – Range Road 52 extension to Highway 22 or Highway 758**

Those routes bolded (in black) provide shorter connections to the adjacent road network; therefore, allowing for faster response times and evacuation of the West Bragg Creek area than other options (shown in *italics*), which require longer times and are in areas with a higher risk of wildfire events.

An internal connection shown in red (utilizes Range Road 52 and a short section of new road required to connect with Mountain Lion Drive) is proposed to ensure that an internal community connection is available for residents and first responders to access the emergency route in the event that the Balsam Avenue Crossing or adjacent roads are unavailable and cannot be used to get to the emergency route.

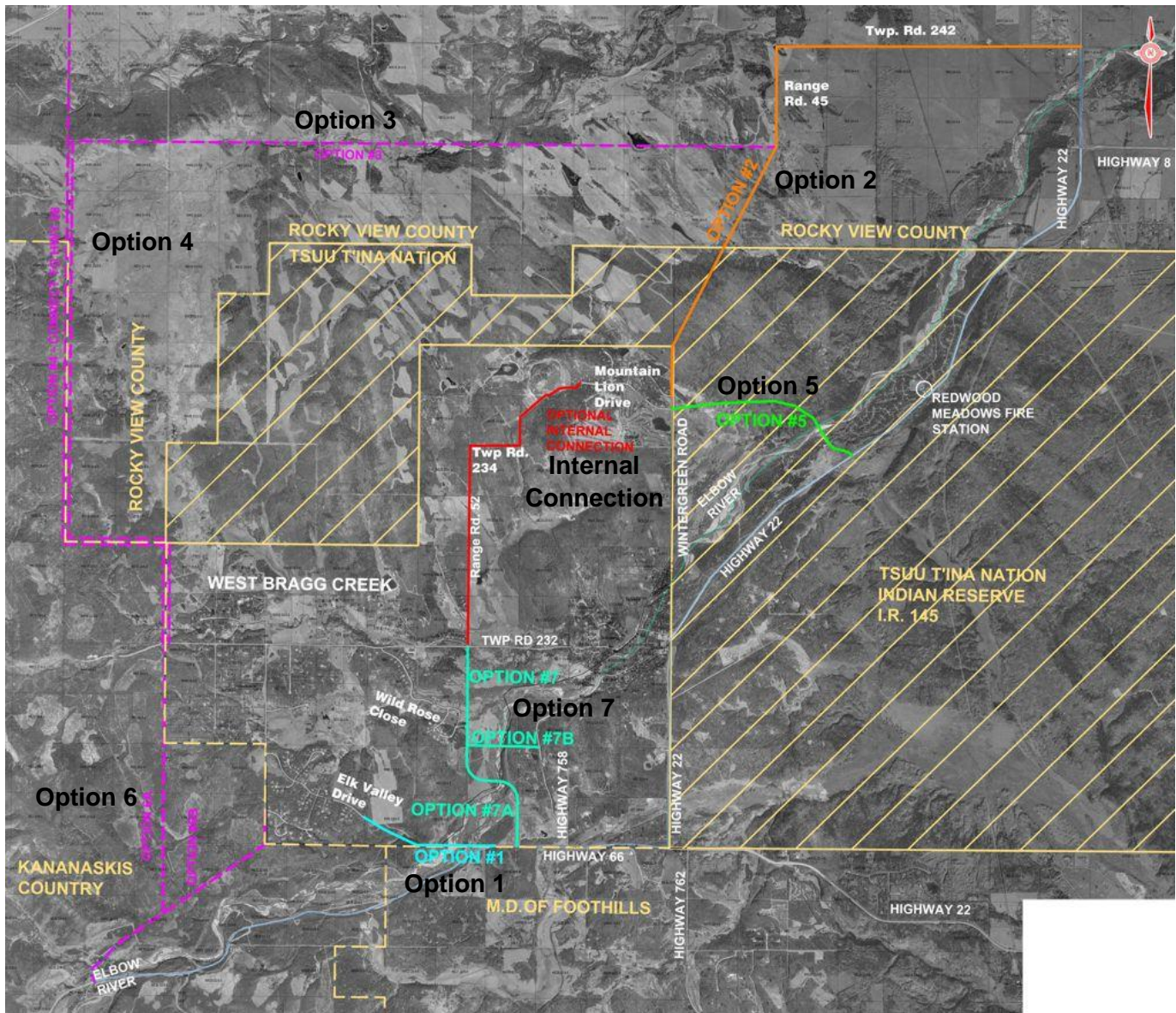


Figure 1: Initial Route Options

### Next Steps

- Gather feedback received from stakeholders and members of the public.
- Evaluate the route options based on their technical merits to provide safe and efficient connections.
- Determine a preferred route.
- Present this route during a second open house (fall 2016).
- Receive study approval from Rocky View County for the recommended alignment.
- No timeline established for right-of-way acquisition or construction at this time.