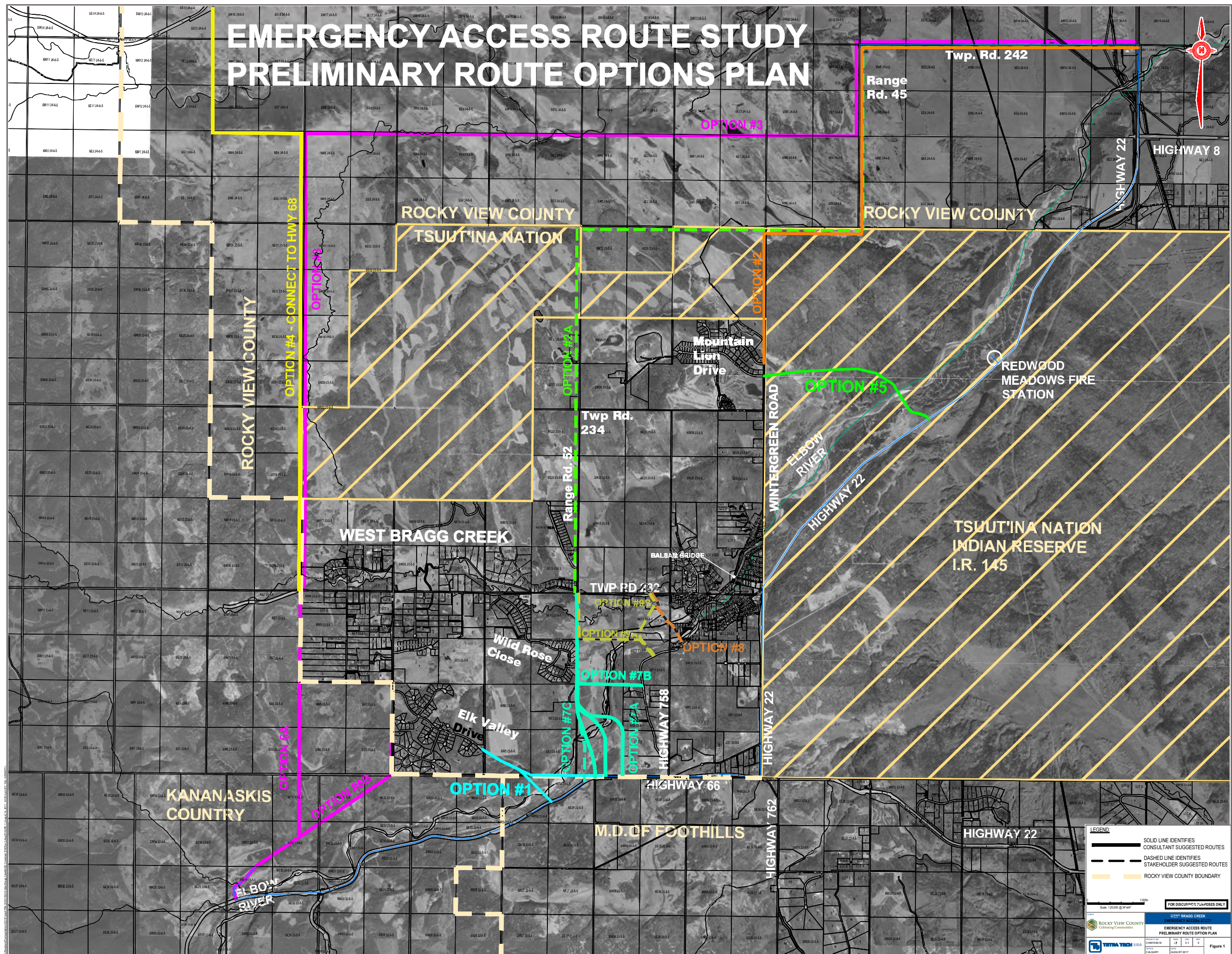


# EMERGENCY ACCESS ROUTE STUDY PRELIMINARY ROUTE OPTIONS PLAN



**LEGEND**

- SOLID LINE IDENTIFIES CONSULTANT SUGGESTED ROUTES
- DASHED LINE IDENTIFIES STAKEHOLDER SUGGESTED ROUTES
- ROCKY VIEW COUNTY BOUNDARY

Scale: 1:2000 @ 30" x 40"

FOR DISCUSSION PURPOSES ONLY

ROCKY VIEW COUNTY  
Calibrating Commission

WEST BRAGG CREEK  
EMERGENCY ACCESS ROUTE STUDY

EMERGENCY ACCESS ROUTE  
PRELIMINARY ROUTE OPTION PLAN

PROJECT NO.	DATE	BY	APP'D
2017-01-01	2017-01-01	J. GIBSON	J. GIBSON

Figure 1