

agri view

October 2015

Take part in the Riparian Planting Project

The Agroforestry and Woodlot Extension Society (AWES) is searching for planting sites to be part of its Riparian Planting Research Project for the spring of 2016. Three sites are currently established in Rocky View County and six more are needed. The project needs landowners who have completed (or will be completing in the near future) an Environmental Farm Plan and want to enhance their riparian area.

CRITERIA ON THE SITES:

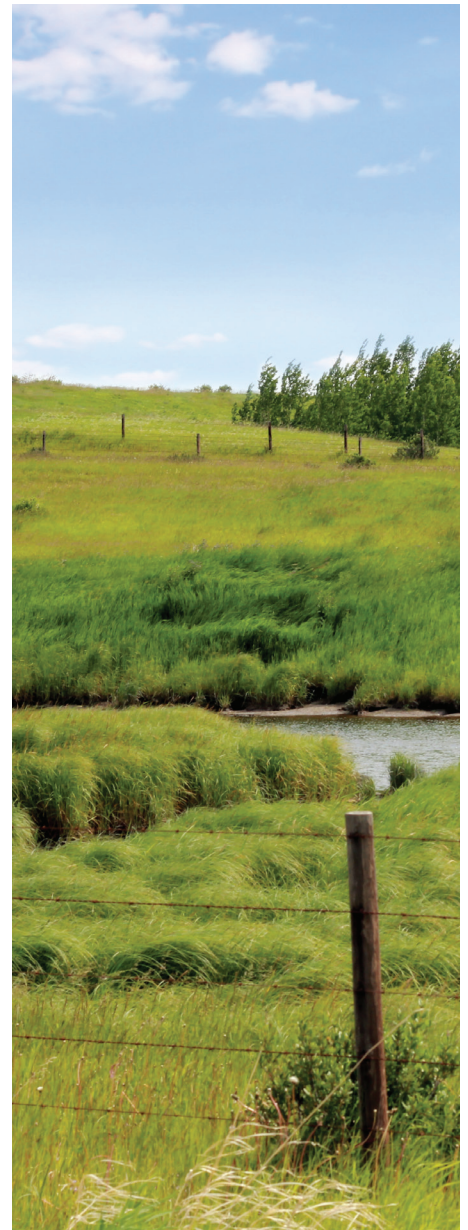
- Must have a riparian area on property (e.g. river, creek, lake)
- As part of the project, planting sites must be fenced a minimum three metres from the riparian area
- Must consider off-site watering systems
- Must have an active livestock operation on property
- Must allow County and AWES staff/contractors access to potential planting sites after providing reasonable notice

Landowners must be willing to cover all of the costs and will be reimbursed.

AWES WILL PROVIDE:

- Tree planting design and services
- Provision of information on post planting maintenance and potential assistance
- Monitoring of sites on a minimal annual basis

If this is something you are interested in participating in please contact Jeff Fleischer 403-520-1287 for more information.



ROCKY VIEW COUNTY'S AGRICULTURAL SERVICE BOARD

Implementing agricultural policies, programs, and services which support a sustainable future for Rocky View County residents.

911 - 32 Avenue NE
Calgary, Alberta T2E 6X6

TEL 403-230-1401
E-MAIL AgServices@rockyview.ca
WEB www.rockyview.ca



ROCKY VIEW COUNTY
Cultivating Communities

Agricultural Awards and Scholarships

Agriculture is the second largest economic driver in the province, and farm families have been the backbone of rural Alberta for over a century. Rocky View County acknowledges this contribution, and each year offers two farm family awards and a scholarship to a local post-secondary student attending Olds College.

The Calgary Stampede's BMO Farm Family Award honours those very deserving families throughout Southern Alberta that ensure our agricultural industry and rural communities continue to thrive. Nominees are hosted at a recognition program during the Calgary Stampede. As special guests, they enjoy a day-long itinerary of Stampede events, including brunch and tickets to the rodeo for the whole family. Rocky View County selects the nominee for this prestigious award from past recipients of the Master Farm Family Award. So your opportunity to nominate someone for the County's Master Farm Family Award.

Rocky View County's annual agricultural scholarship (\$500) is designed to encourage local young people to pursue a career in the agricultural field. First- and second-year students from Rocky View County attending Olds College with a major in agricultural production or land and water management



are eligible. To apply for this scholarship, contact Olds College at www.oldscollege.ca/scholarships.

Two 4-H scholarships (\$500 each) are sponsored by Rocky View County each year. These are targeted to active 4-H members who live in the County, and are entering any post-secondary educational institution (not restricted to Alberta and not just pursuing an agriculture degree). Check with your local 4-H leader or apply through the 4-H Foundation of Alberta.

The Master Farm Family Award was initiated in 1989 and recognizes a ranch or farm family for their achievements in technical farm production/sustainability practices, team farm business management, agricultural industry involvement, and community

service. Previous families who received this award are well known in Rocky View County, and have been strong community builders and outstanding producers. Many of their children continue in the business of agriculture or related fields.

The Master Farm Family Award for 2015 was presented to the Taks Family from the Crossfield area: Murray and Reba, Murray's father Pete and children Julie, Ryan and Kevin (and their families).

To nominate a deserving farm family for the 2016 Master Farm Family Award, please download a nomination form at www.rockyview.ca/agriculture, then click on Agricultural Information and Services and submit before February 15, 2016.





Adding “Topsoil” for Agricultural Land Improvement

Development in the Calgary area has displaced an abundance of so-called “topsoil” and many landowners have accepted offers to improve the quality of their soil by taking this excess soil. There may be some advantages, but there may be some hidden disadvantages in accepting soil on your fields. Consider the following:

- a) Topsoil may not be topsoil, but may include a high percentage of clay and/or contaminants.
- b) Some of the most likely contaminants will be perennial weeds, spilled fuels, and rocks.
- c) If topsoil is high in clay and previously compacted, crop growth is usually reduced and the soil profile is changed (poor quality soil on top of your own better quality soil).
- d) Poor quality topsoil may also decrease crop growth by preventing water infiltration and uptake of moisture by crops.
- e) When top dressing permanent hayfields, any more than several inches may suffocate the crop, requiring re-seeding.
- f) Filling low areas and wetlands is contrary to provincial and County wetland policies.
- g) The functions of wetlands are lost when filled in (groundwater recharge, sponge effect to capture rainwater, storage

of phosphorus, prevention of surface water runoff into County roadways, etc.).

- h) Depending on placement of topsoil, drainage patterns can be changed, usually causing faster removal of rain and snow melt.
- i) Flooding of County roadways and neighbouring properties often results.
- j) Berming of agricultural lands may provide some flooding protection, but may cause off-site flooding impacts as noted above.

Ask for additional information about the site from which the soil originated and a soil analysis to confirm it actually is topsoil. Topsoil should have a balance of clay, silt, and sand, with an organic matter content of at least 3%, a SAR/EC rating of ‘good’, and PH values in an ‘acceptable’ range for crop growth. (Soil Quality Guidelines for Unrestricted Land Use from Salt Contamination Assessment and Remediation Guidelines, AENV 2001) See charts.

Chemical contaminants, soil-borne diseases like clubroot of canola or *Fusarium graminearum*, and noxious weed seeds may also be present. Consider carefully

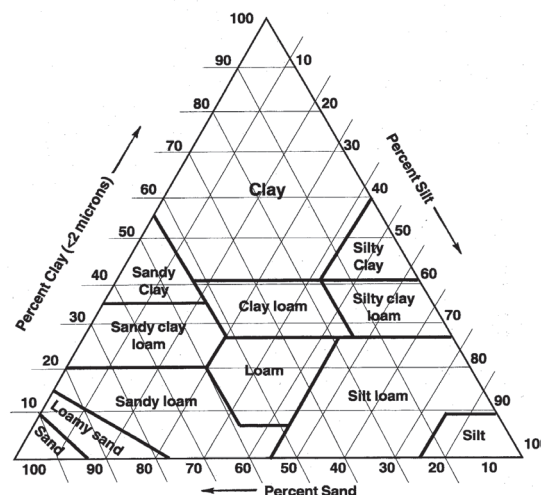
whether you can live with the potential costs of these risks.

Lastly, check with the County for development permit requirements before you make your decision. New rules are being proposed to make the process simpler for agricultural and landscape-related soil improvements, but call Development Services before you agree to accept topsoil or fill. Development Services can be reached by calling 403-230-1401.

Typical Soil Organic Matter Levels in Cultivated Soil

Soil Zone	%OM
dark gray	2-3
gray	1-2
black	4-6
dark brown	3-4
brown	2-3

Soil Texture Triangle



Surface Rights, Land, and Energy: Pricing Transparency Mapping Project

The Farmers' Advocate Office (FAO) is currently collecting surface lease, transmission line, seismic, and pipeline right-of-way agreements from landowners for the Surface Rights, Land, and Energy: Pricing Transparency Mapping Project.

"This fall the FAO will launch four interactive online maps depicting project details and the compensation values paid to landowners under the heads of compensation," says Jeana Les, research and communications specialist for the FAO. "There is currently no central repository where this type of information is compiled and accessible to landowners."

"When negotiating with energy companies, landowners want

to know if the compensation offer made by the land agent is within the range offered to other landowners," says Les. "The pricing transparency maps will provide a starting point for rural landowners who are negotiating with energy companies."

Les says landowners were positive about the compensation maps the FAO produced from 2007-2009. The new maps will be more robust and interactive, including a greater number of details and better sorting functions. In addition, the new maps will be updated on a continuous basis.

The FAO is currently accepting seismic and pipeline right-of-way agreements no older than 2011, and surface lease and

transmission agreements no older than 2010. Please note that originals should not be submitted, as they will not be returned. No agreements containing a privacy clause will be accepted. Participants will be required to sign a release pursuant to the Freedom of Information and Protection of Privacy Act. Names and contact information will not be released through the maps. Legal land description of the section will be depicted.

NOTE: All submissions must be accompanied by a Consent to Release of Information Form. To find this form, and for more information, contact Jeana Les by e-mail at jeana.les@gov.ab.ca or by phone at 310-FARM (3276).

University Project Looking for Wetlands to Restore

The University of Alberta is undertaking a research project to pay producers for wetland restoration in the Nose Creek watershed area of the County.

On the project website at www.RestoreOurWetlands.ca, you will find a map. Zoom in to check if your lands are within the study area. If you are in the research area and your property contains ditched wetlands that you're willing to restore, the project team is interested in hearing from you.

If you are eligible, the team can send you maps of the wetlands that they could restore on your

land, for fair compensation. You can then discuss further with the team and decide if you would like to participate.

The project team will host information sessions this fall. For more information, please visit the website and sign up for the project mailing list, or contact Stacey O'Malley at 780-248-1073 or wetlands@ualberta.ca.

Additional Ways to Participate

Researchers from the University of Alberta are looking for participants in a survey as part of the wetland restoration

project. This survey is focused on the social factors involved in participation in wetland conservation incentive programs.

The research team is interested in landowners' values and ideas about their land and wetland restoration in the County.

The study is seeking landowners who own a farm, ranch, or acreage to complete the survey. Participation will take approximately 25 minutes and can be completed online, or by mail upon request. If you are interested in participating, please e-mail Kaitlyn Cyr at cyr1@ualberta.ca.

You're Invited

The Society for Range Management International
Mountain Section Invites You to Attend its Fall Meeting

With speakers from the University of Alberta, the
RCMP, Alberta Environment & Parks, the Alberta
Veterinary Medical Association, & more!

November 6th, 2015 from 1 to 5 p.m.
Alberta Ag Building, 97 East Lake Ramp NE
Airdrie, Alberta

Please visit our website for more details:
<http://ims.rangelands.org>

Your child's school was evacuated. Where to?

**In an emergency, you need to know
what's happening and what to do
about it.**

But who will tell you?

Sign up for emergency alerts through
Rocky View County's SAFE & SOUND
system. Get fast, clear, reliable
information sent to your phone, e-mail,
and text message accounts whenever a
fire, flood, severe weather, chemical spill,
or other emergency threatens.

Don't be the last to know. Sign up today!
www.rockyview.ca/safe

SAFE & SOUND
COMMUNITIES COMMUNICATION



ROCKY VIEW COUNTY



Return your unwanted or obsolete pesticides and livestock medications

Farmers: safely dispose of your unwanted agricultural pesticides
and livestock/equine medications from **October 26-30, 2015**
at one of the following locations, *for no charge*.

Monday, October 26

Fort MacLeod	Crop Production Services 403-553-3774
Benalto	Benalto Ag Services 403-746-2012
Oyen	Richardson Pioneer 403-664-2620
Dunmore	Richardson Pioneer 403-527-6600

Tuesday, October 27

Bow Island	Crop Production Services 403-545-6806
Magrath	Richardson Pioneer 403-758-3162
Hanna	Fox Lake Agro 403-854-2820
Olds	Richardson Pioneer 403-556-3222

Wednesday, October 28

Lethbridge	Cargill 403-327-4380
Crossfield	Crop Production Services 403-946-4588
Taber	Crop Production Services 403-223-2807
Drumheller	Kneehill Soil Services 403-823-4600

Thursday, October 29

Caresland	CHS Inc. 403-934-4644
Craddock	CHS Inc. 403-733-3529
Linden	Kneehill Soil Services 403-546-4050
Vauxhall	Crop Production Services 403-654-4464

Friday, October 30

Picture Butte	Crop Production Services 403-732-4585
Brooks	Crop Production Services 403-362-2072
High River	Crop Production Services 403-652-3500
Hussar	Richardson Pioneer 403-787-3931

* Obsolete pesticides and livestock/equine medications will be accepted from 9 a.m. until 4 p.m.
at each site on the date indicated.

Program supported by:



For more information, please call CleanFARMS
at 877-622-4460 or visit www.cleanfarms.ca

Be on the Lookout for Invasive Species

Due to the drought conditions in much of Alberta this summer, it is likely feed will be brought in from out of province. This greatly increases the risk of invasive species being transported into your area.

The threat from weed species is likely higher than from rats, but rats are continually looking for a free ride into Alberta. With the high cost of feed there is a greater chance that old feed will be sold to Alberta producers. If the feed

you are purchasing was baled in 2014 or earlier there is a greater chance of finding rats that may have made their home in the bales. Green feed and straw are the highest risk feeds that may contain rats from out of province. Please keep an eye open and be extra vigilant if purchasing feed from out of province.

Your concern to keep Alberta rat-free is greatly appreciated.

Sent on behalf of Phil Merrill

Agricultural Supplies Available

FOR RENT:

Pasture sprayer

No charge to rent. Cost covered by the Agri-Environmental Incentive Program.
\$1,000 deposit required at drop off.

Skunk trap

Free for two weeks, \$25 per week after the first two weeks.
\$125 deposit required.

Magpie trap

Free for two weeks, \$25 per week after the first two weeks.
\$125 deposit required.

Pigeon trap

Free for two weeks, \$25 per week after the first two weeks.
\$125 deposit required.

Hay and soil probes

Free for two weeks, \$25 per week after the first two weeks.
\$125 deposit required.

Tree planter

\$50 per day

FOR SALE:

Pocket gopher traps

\$10.95 each

Weeds of the prairies

\$30 each

Alberta Invasive Plant Identification Guide

\$5 each

Bat boxes

\$30 each

Green Acreages Guide Workbook

\$30 each

Twine recycling bags

FREE, pickup at the municipal building

For more information or to rent or purchase any of these items please call 403-230-1401 and ask to speak with Agricultural Services.

AGRICULTURAL SERVICE BOARD

Councillors:

Earl Solberg, DIVISION 5, ASB CHAIR

Liz Breakey, DIVISION 1

Bruce Kendall, DIVISION 9

Farmer Representatives:

Susan Church, COCHRANE

Gwen Isaac, EAST AIRDRIE,

Jim Dunn, WEST AIRDRIE

Jessica Dugdale, SE ROCKY VIEW COUNTY

Agricultural Services Staff:

Tim Dietzler, AGRICULTURAL FIELDMAN

Jeff Fleischer, AGRICULTURAL SERVICES TEAM LEAD

Laura Poile, AGRICULTURAL SERVICES OFFICER

Ashley Stewart, AGRICULTURAL SERVICES OFFICER

Kristyn Smigelski, AGRICULTURAL SERVICES OFFICER

Alberta Agriculture and Forestry Key Contact:

Michelle McKinnon

NEWSLETTER SUBSCRIPTION

The Agri-View newsletter is a free publication for Rocky View County residents. If you wish to be on the mailing list, please contact Agricultural Services.

If addressing is incorrect, or if you wish to unsubscribe, please contact Agricultural Services at 403-520-7273 or e-mail AgServices@rockyview.ca



ROCKY VIEW COUNTY
Cultivating Communities

**For more information
about Growing Forward
and EFP call 403-230-1401**

Growing Forward